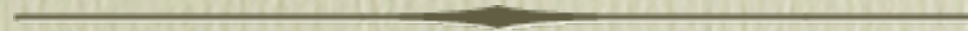


AniMap ver. 3.0.2

County Boundary Historical Atlas

The Gold Bug



by David Walker

Ottawa TMG Users Group

15 May 2011



# Introduction



# Introduction

- AniMap 3.0.2 County Boundary Historical Atlas was written for Windows, but works 100% on the Windows side of a Mac computer.



# Introduction

- AniMap 3.0.2 County Boundary Historical Atlas was written for Windows, but works 100% on the Windows side of a Mac computer.



# Introduction

- AniMap 3.0.2 County Boundary Historical Atlas was written for Windows, but works 100% on the Windows side of a Mac computer.
- Counties are restricted to US states only, but is a great resource for anyone with US ancestry to see how county boundaries have changed from earliest times.



# Introduction

- AniMap 3.0.2 County Boundary Historical Atlas was written for Windows, but works 100% on the Windows side of a Mac computer.
- Counties are restricted to US states only, but is a great resource for anyone with US ancestry to see how county boundaries have changed from earliest times.



# Introduction

- AniMap 3.0.2 County Boundary Historical Atlas was written for Windows, but works 100% on the Windows side of a Mac computer.
- Counties are restricted to US states only, but is a great resource for anyone with US ancestry to see how county boundaries have changed from earliest times.
- Canadian chronology from 1608, provincial/regional boundaries for Canada from 1713-1999



# Introduction

- AniMap 3.0.2 County Boundary Historical Atlas was written for Windows, but works 100% on the Windows side of a Mac computer.
- Counties are restricted to US states only, but is a great resource for anyone with US ancestry to see how county boundaries have changed from earliest times.
- Canadian chronology from 1608, provincial/regional boundaries for Canada from 1713-1999



# Introduction

- AniMap 3.0.2 County Boundary Historical Atlas was written for Windows, but works 100% on the Windows side of a Mac computer.
- Counties are restricted to US states only, but is a great resource for anyone with US ancestry to see how county boundaries have changed from earliest times.
- Canadian chronology from 1608, provincial/regional boundaries for Canada from 1713-1999
- This latest version includes larger maps, 250,000+ more listings in the database, over 75,000 historical sites.



# Introduction

- AniMap 3.0.2 County Boundary Historical Atlas was written for Windows, but works 100% on the Windows side of a Mac computer.
- Counties are restricted to US states only, but is a great resource for anyone with US ancestry to see how county boundaries have changed from earliest times.
- Canadian chronology from 1608, provincial/regional boundaries for Canada from 1713-1999
- This latest version includes larger maps, 250,000+ more listings in the database, over 75,000 historical sites.



# Introduction

- AniMap 3.0.2 County Boundary Historical Atlas was written for Windows, but works 100% on the Windows side of a Mac computer.
- Counties are restricted to US states only, but is a great resource for anyone with US ancestry to see how county boundaries have changed from earliest times.
- Canadian chronology from 1608, provincial/regional boundaries for Canada from 1713-1999
- This latest version includes larger maps, 250,000+ more listings in the database, over 75,000 historical sites.
- Animap displays over 2,300 maps that show the changing county boundaries for each of the 48 adjacent states since colonial times.



# Introduction

- AniMap 3.0.2 County Boundary Historical Atlas was written for Windows, but works 100% on the Windows side of a Mac computer.
- Counties are restricted to US states only, but is a great resource for anyone with US ancestry to see how county boundaries have changed from earliest times.
- Canadian chronology from 1608, provincial/regional boundaries for Canada from 1713-1999
- This latest version includes larger maps, 250,000+ more listings in the database, over 75,000 historical sites.
- Animap displays over 2,300 maps that show the changing county boundaries for each of the 48 adjacent states since colonial times.



# Introduction

- AniMap 3.0.2 County Boundary Historical Atlas was written for Windows, but works 100% on the Windows side of a Mac computer.
- Counties are restricted to US states only, but is a great resource for anyone with US ancestry to see how county boundaries have changed from earliest times.
- Canadian chronology from 1608, provincial/regional boundaries for Canada from 1713-1999
- This latest version includes larger maps, 250,000+ more listings in the database, over 75,000 historical sites.
- Animap displays over 2,300 maps that show the changing county boundaries for each of the 48 adjacent states since colonial times.
- Maps can be viewed individually, or as a slide show that scrolls through the years.



# SiteFinder Database



# SiteFinder Database

- SiteFinder database, included with AniMap, contains listings for more than one million places in the United States, including more than 120,000 variant names



# SiteFinder Database

- SiteFinder database, included with AniMap, contains listings for more than one million places in the United States, including more than 120,000 variant names
- Included in the listings are cities & towns, locales (including railroad stations, trading posts, farms & ranches, plantations, ruins, ghost towns)



# SiteFinder Database

- SiteFinder database, included with AniMap, contains listings for more than one million places in the United States, including more than 120,000 variant names
- Included in the listings are cities & towns, locales (including railroad stations, trading posts, farms & ranches, plantations, ruins, ghost towns)
- Other categories which you can search for separately or in combination include courthouses, cemeteries, churches, schools, islands, townships



# SiteFinder Database

- SiteFinder database, included with AniMap, contains listings for more than one million places in the United States, including more than 120,000 variant names
- Included in the listings are cities & towns, locales (including railroad stations, trading posts, farms & ranches, plantations, ruins, ghost towns)
- Other categories which you can search for separately or in combination include courthouses, cemeteries, churches, schools, islands, townships
- Much of the information in SiteFinder was extracted from the US Geological Survey and US Post Office



# AniMap Opening Display


AniMap

Pick State

Alabama  
Alaska  
Arizona  
Arkansas  
California  
Canada  
Colorado  
Connecticut  
Delaware  
Florida  
Georgia  
Hawaii  
Idaho  
Illinois  
Indiana  
Iowa  
Kansas  
Kentucky  
Louisiana  
Maine  
Maryland  
Massachusetts  
Michigan  
Minnesota  
Mississippi  
Missouri  
Montana  
Nebraska  
Nevada  
New Hampshire  
New Jersey  
New Mexico  
New York  
North Carolina  
North Dakota  
Ohio  
Oklahoma  
Ontario  
Oregon  
Pennsylvania  
Railroads - MA/CT/RI  
Railroads - ME  
Railroads - NH/VT  
Rhode Island  
South Carolina  
South Dakota  
Tennessee  
Texas  
U. S. - All Counties  
United States  
Utah  
Vermont  
Virginia  
Washington  
West Virginia  
Wisconsin  
Wyoming

WELCOME TO

AniMap  
Plus



COUNTY BOUNDARY  
HISTORICAL ATLAS

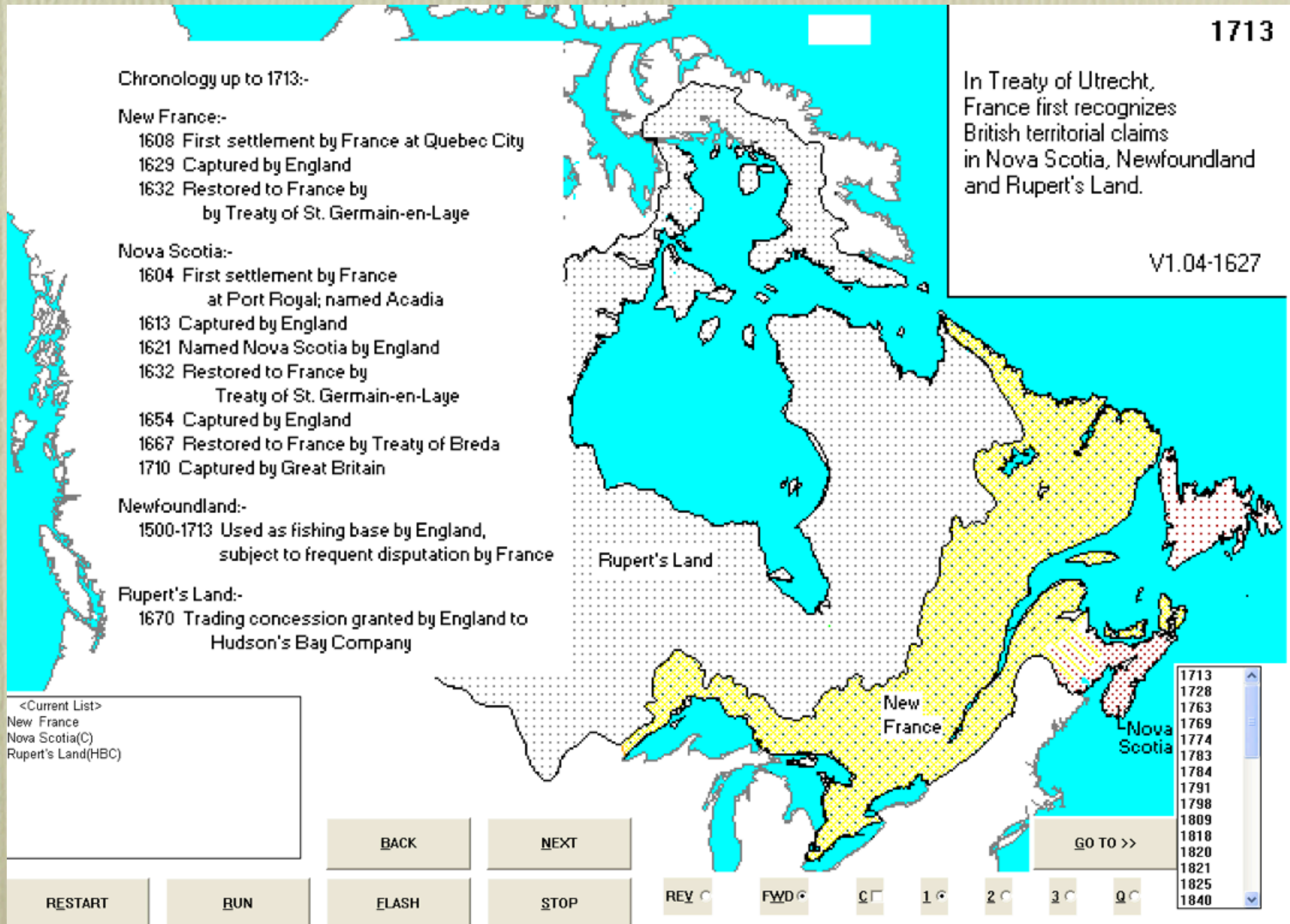
Version 3.0.2  
Copyright 1991-2010  
Adrian B. Ettlinger

Website: <http://www.goldbug.com>

← Double-click on list to select state

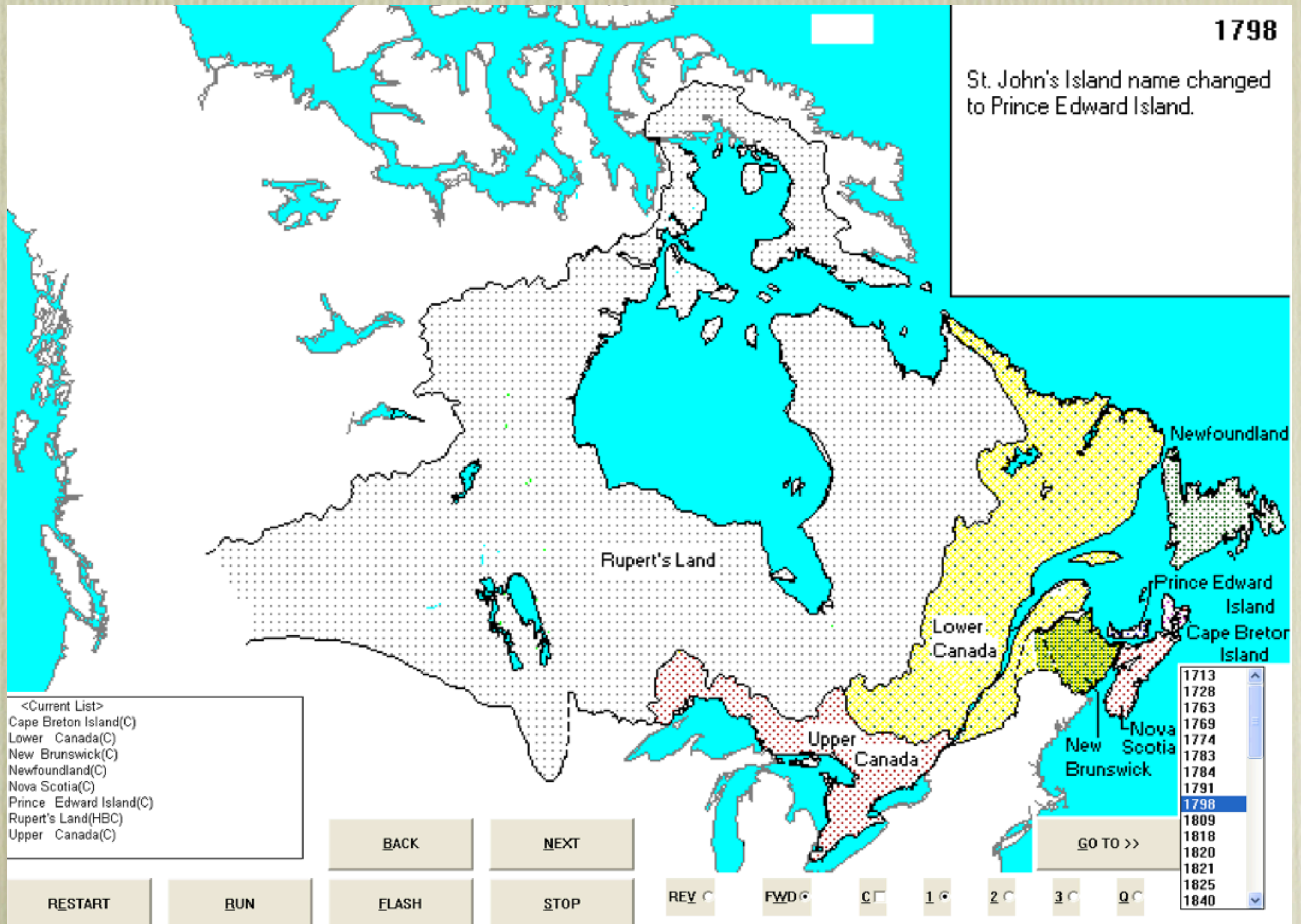


# AniMap - Canada 1713



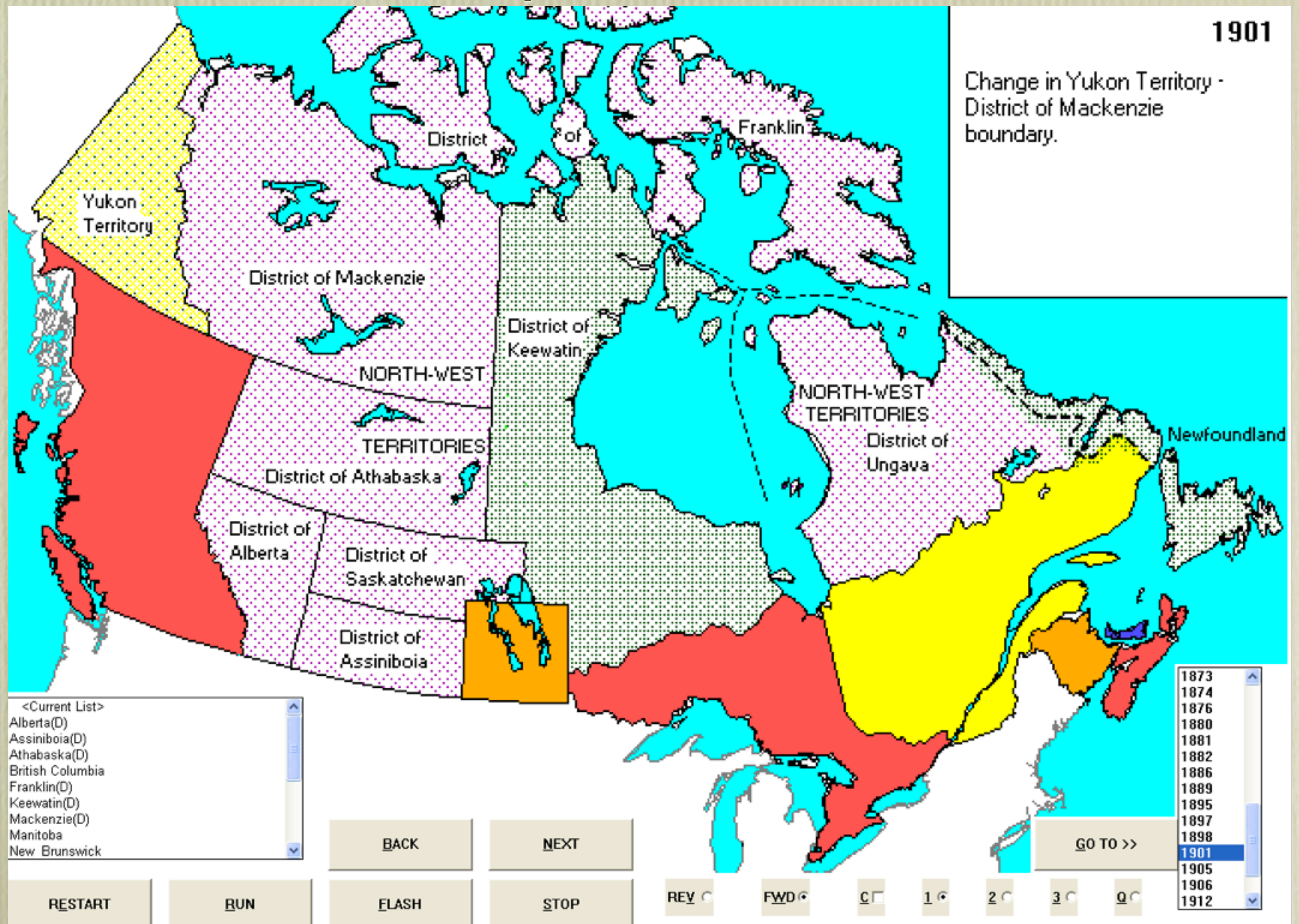


# AniMap - Canada 1798



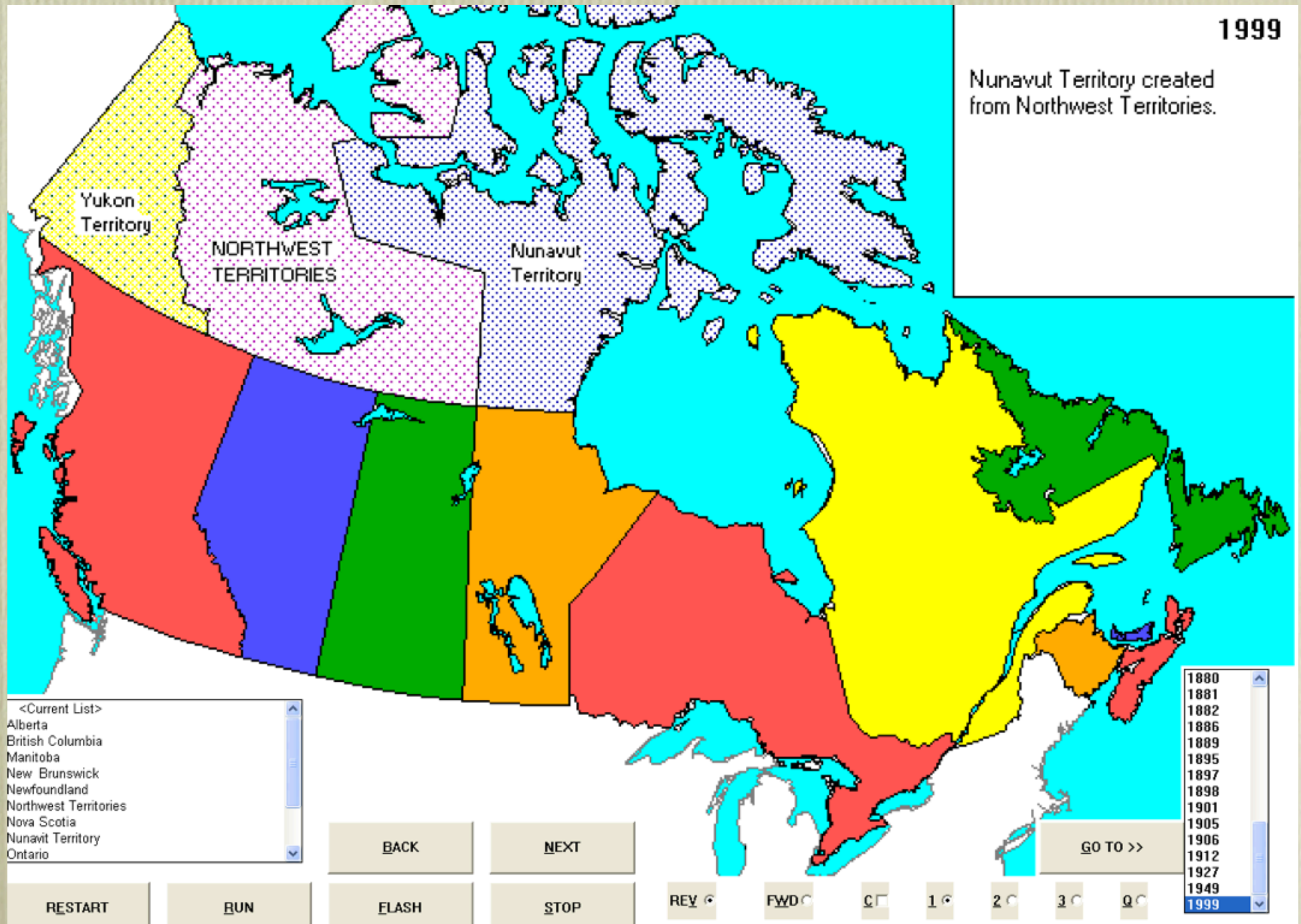


# AniMap - Canada 1901





# AniMap - Canada 1999





# AniMap - US City Search

Search for text

Search for:

In: State:  County:

☐ Case-Sensitive

Cancel

OK

☒ Places

☐ Civil

☐ Mines

☐ Buildings

☐ Courthouses

☐ Parks

☐ Cemeteries

☐ Islands

☐ Post Offices

☐ Churches

☐ Military

☐ Reserves

☐ Schools

All

Clear



# AniMap - US SiteFinder

Plot -- Available Records

CO	Nathrop	Chaffee	38.747 106.076
CO	Leadville	Lake	39.251 106.292

Delete Item

Delete All

Cancel

COLORADO

1850

County Codes:-

<Current List>  
Ta Taos(NM)

Area of present state then divided among  
Utah, New Mexico Territories and unorganized area.  
Taos County, New Mexico Territory, extended slightly into  
area of present state of Colorado.

V1.09-7630

Utah Territory

Nathrop >>

New Mexico Territory

COLORADO

Ta

RESTART

BACK

NEXT

RUN

FLASH

STOP

REV

FWD

GO TO >>

1850  
1852  
1854  
1855  
1856  
1857  
1858  
1859  
1860  
1861  
1866  
1870  
1872  
1874  
1876  
1877  
1879  
1881  
1883  
1885  
1886  
1887  
1889

1

2

3

Q



# AniMap US - Colorado in 1850

COLORADO

1850

Area of present state then divided among  
Utah, New Mexico Territories and unorganized area.  
Taos County, New Mexico Territory, extended slightly into  
area of present state of Colorado.

V1.09-7630

County Codes:-

<Current List>  
Ta Taos(NM)

Utah Territory

Leadville >>

Nathrop >>

New Mexico Territory

COLORADO

Ta

RESTART

GO TO >>

1850

1852

1854

1855

1856

1857

1858

1859

1860

1861

1866

1870

1872

1874

1876

1877

1879

1881

1883

1885

1886

1887

1889

BACK

NEXT

RUN

FLASH

STOP

REV

FWD

1

2

3

Q



# AniMap US - Colorado in 1861

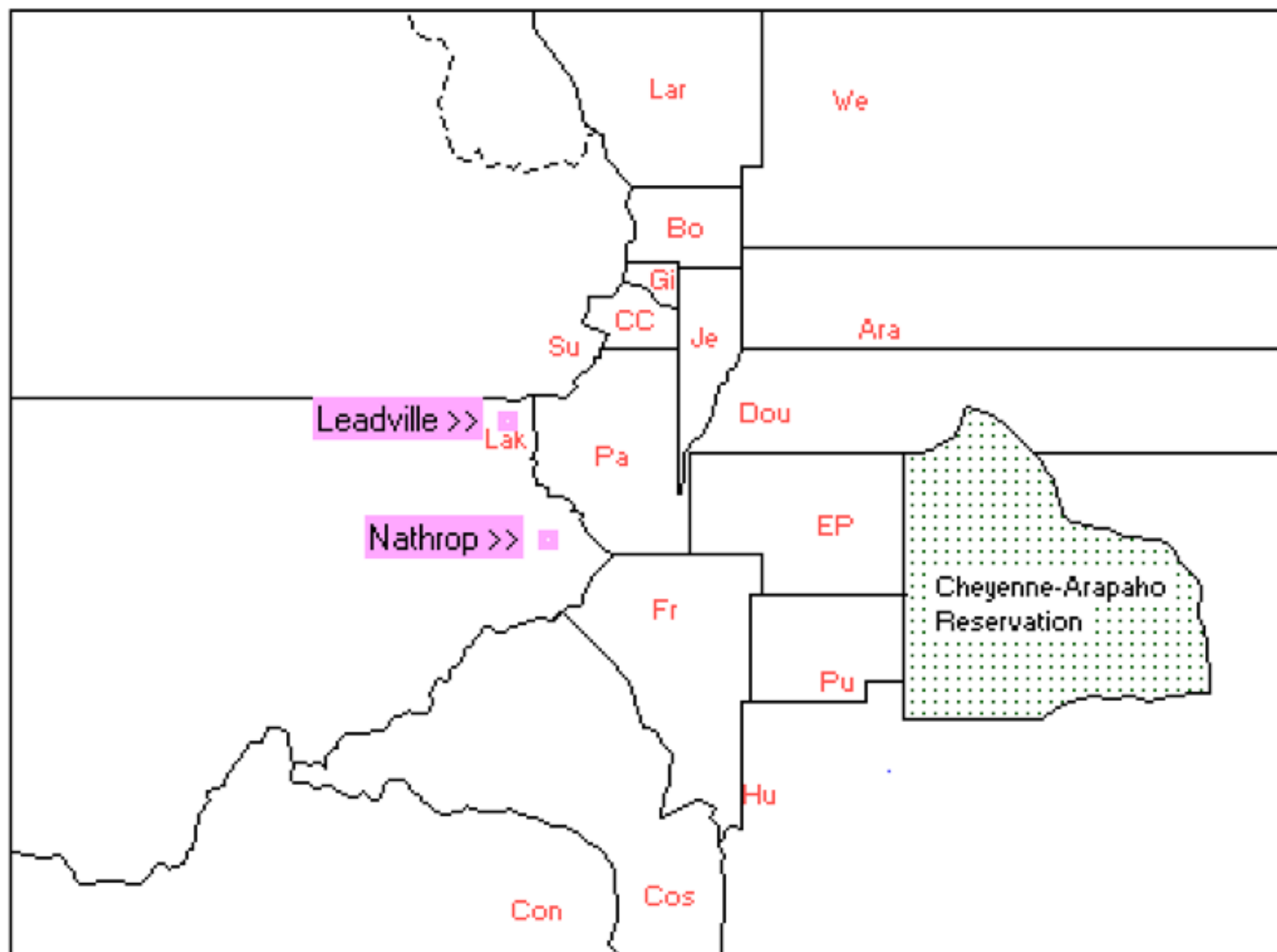
Colorado Territory established. Original counties: Arapahoe, Boulder, Clear Creek, Conejos(briefly named "Guadalupe"), Costilla, Douglas, El Paso, Fremont, Gilpin, Huerfano, Jefferson, Lake, Larimer, Park, Pueblo, Summit, Weld. North Park area treated as part of Summit, then Grand; 1886 court decision ruled it statutorily part of Larimer.

1861

County Codes:-

<Current List>

Ara Arapahoe  
Bo Boulder  
CC Clear Creek  
Con Conejos  
Cos Costilla  
Dou Douglas  
EP El Paso  
Fr Fremont  
Gi Gilpin  
Hu Huerfano  
Je Jefferson  
Lak Lake  
Lar Larimer  
Pa Park  
Pu Pueblo  
Su Summit  
We Weld



COLORADO

RESTART

GO TO >>

BACK

NEXT

RUN

FLASH

STOP

REV ◀

FWD ▶

1850  
1852  
1854  
1855  
1856  
1857  
1858  
1859  
1860  
1861  
1866  
1870  
1872  
1874  
1876  
1877  
1879  
1881  
1883  
1885  
1886  
1887  
1889

Q

1

2

3

Q



# AniMap US - Colorado in 1872

Platte from Weld.

1872

County Codes:-

<Current List>

- Ara Arapahoe
- Be Bent
- Bo Boulder
- CC Clear Creek
- Con Conejos
- Cos Costilla
- Dou Douglas
- EP El Paso
- Fr Fremont
- Gi Gilpin
- Gre Greenwood
- Hu Huerfano
- Je Jefferson
- LA Las Animas
- Lak Lake
- Lar Larimer
- Pa Park
- PI Platte
- Pu Pueblo
- Sag Saguache

RESTART

GO TO >>

1850

1852

1854

1855

1856

1857

1858

1859

1860

1861

1866

1870

1872

1874

1876

1877

1879

1881

1883

1885

1886

1887

1889

REV

FWD

1

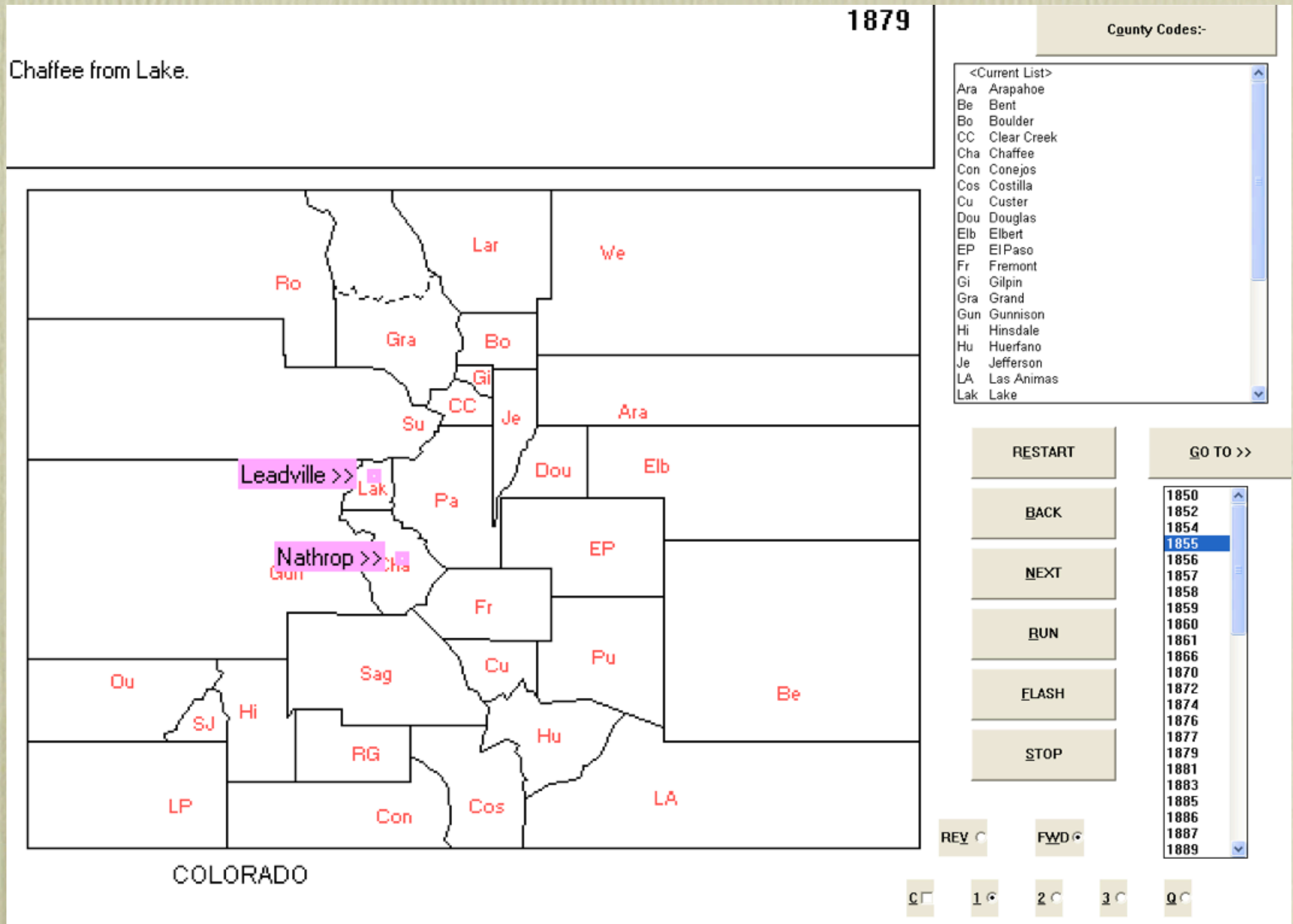
2

3

Q



# AniMap US - Colorado in 1879





# AniMap US - Colorado in 2001

2001

Broomfield from Boulder, Adams  
Weld, Jefferson.

County Codes:-

<Current List>  
Ad Adams  
Al Alamosa  
Ara Arapahoe  
Arc Archuleta  
Ba Baca  
Be Bent  
Bo Boulder  
Br Broomfield  
CC Clear Creek  
Cha Chaffee  
Che Cheyenne  
Con Conejos  
Cos Costilla  
Cr Crowley  
Cu Custer  
Del Delta  
Den Denver  
Dol Dolores  
Dou Douglas  
Ea Eagle

RESTART

GO TO >>

1944  
1945  
1946  
1948  
1950  
1951  
1952  
1954  
1955  
1960  
1961  
1962  
1963  
1964  
1965  
1969  
1970  
1972  
1973  
1976  
1980  
1988  
2001

REV

FWD

C

1

2

3

Q

Colorado map showing county boundaries and names. The map is labeled with county codes in red text. Two locations are highlighted with pink boxes and labels: Leadville >> and Nathrop >>. The map is titled 'COLORADO' at the bottom.

Nathrop, today, is a ghost town with a post office & a ZIP code



# Cost

Cost: US\$79.00, upgrade US\$39.50

Link: <http://www.goldbug.com/AniMap.html>