

Creating a Custom Image Gallery in Second Site

Presented by David Walker

Ottawa TMG Users Group

11 January 2014

Introduction

- ❖ How many of us have, or have access to, albums & shoeboxes filled with photographs?
- ❖ How many of these snapshots or formal portraits have no name on the back?

Introduction

- ❖ This presentation will describe a method to create a gallery of images of unknown people.
- ❖ The contents are not yet exhibits since they haven't been linked to a person in the project.
- ❖ Assuming one publishes their site to the Internet, this procedure might generate feedback from visitors who are able to identify these unknowns. Distributing your site on CD would reach a far smaller audience.
- ❖ This presentation is based using Second Site ver. 5.0 Build 9

Introduction

- ❖ Taken from John Cardinal's web site, an image gallery is described as:
- ❖ "An Image Gallery is a User Item that adds a list of images to a Custom Page. The images are rendered as thumbnail images, and if desired, each thumbnail can be used as a link to the full-size version. An Image Gallery looks similar to an Exhibit Gallery, but an Image Gallery is used with images that are *not* exhibits."

The End Result

My Home Page features a new gallery. Clicking on this link will display an image gallery of unknown people.



Ancestral Trails Genealogy Web Site

An ongoing family history research project by David A. Walker (david@ancestraltrails.ca)



[Recent Changes](#) [Person Search](#) [Unknown People](#) [Notable People](#) [B-M-D Maps](#) [Burial & Repository Maps](#) [Homesteads](#) [Ancestral Loyalist Migrations](#) [Other Ancestral Migrations](#) [Calendars of Events](#) [Repositories](#) [Icon Description](#)

The main focus of study is within the three maritime provinces of Canada, namely Prince Edward Island, New Brunswick and Nova Scotia, as well as New England and the British Isles.

If you are interested in viewing locations for various events, such as births, baptisms, marriages and burials, click on the Repositories link above

Major surnames in this research include Blanchard, Braddock, Brown, Cairns, Cannon, Clark, Coffin, Coffyn, Converse, Cory, Corey, Coy, Courtenay, Crawford, Doty, Drake, Durgan, Dyer, Fortescue, Gibson, Glover, Grenville, Hooper, Hull, Marchbank, Palmer, Read, Robbins, Seaman, Slocum, Titus, Townsend, Townshend, Wallace, Walker, White, Wright.

Loyalist family names include Palmer (Marcus Sr.), Clark (John Sr.), Seaman (Jacomiah), Crawford (John Jr.), Slocum (Ebenezer), Cory/Corey (Ebenezer), Coffin (Elisha), Converse (Jesse), Cottle (Nathaniel Bradford Sr.), Hooper (Thomas Sr.), Robins (Richard), Braddock (Samuel) and Wiggins (Jacob F.).

New items added include maps showing locations of births, marriages, deaths, burials & repositories, place index, latest updates, homesteads, migration routes and notable people. Check back often to view new additions.

Please report any errors or suggested additions. **Living people are not shown on this site.**

Compiler: **David Walker**, Edwards, Ontario, Canada
Site updated on 3 Jan 2014; 52,534 non-living people

The End Result

This is the top part of the image gallery.

My plea for help

Ancestral Trails Genealogy Web Site

An ongoing family history research project by David A. Walker (david@ancestraltrails.ca)

Unknown People

[Home](#) [Surnames](#) [Index](#) [Charts](#) [Photos](#) [Places](#)

[Recent Changes](#) [Person Search](#) [Unknown People](#) [Notable People](#) [B.M.D. Maps](#) [Burial & Repository Maps](#) [Homesteads](#) [Ancestral Loyalist Migrations](#) [Other Ancestral Migrations](#) [Calendars of Events](#) [Repositories](#) [Icon Description](#)

Photographs of unknown people. Please let me know if you can identify anyone from this gallery.



Possibly a Wallace descendant from Prince Edward Island.
2009-12-01 17-40-20_0013 - Version 2



Possibly a Palmer girl from Sussex, New Brunswick.
Hattie Brown ca. 1880



From a collection of photographs from Peter Walker, Travellers Rest, PEI
Image-09_1865 resized



From a collection of photographs from Peter Walker, Travellers Rest, PEI
Image-11 resized



From a collection of photographs from Peter Walker, Travellers Rest, PEI
Image-15 resized



From a collection of photographs from Peter Walker, Travellers Rest, PEI
Image-16 resized



From a collection of photographs from Peter Walker, Travellers Rest, PEI
Image-17 resized



From a collection of photographs from Peter Walker, Travellers Rest, PEI
Image-18 resized



From a collection of photographs from Peter Walker, Travellers Rest, PEI
Image-19 resized



From a collection of photographs from Peter Walker, Travellers Rest, PEI
Image-20 resized



From a collection of photographs from Peter Walker, Travellers Rest, PEI
Image-20_Ccompliments of Zaire resized



From a collection of photographs from Peter Walker, Travellers Rest, PEI
Image-21 resized



From a collection of photographs from Peter Walker, Travellers Rest, PEI
Image-22 resized



From a collection of photographs from Peter Walker, Travellers Rest, PEI
Image-23 resized



From a collection of photographs from Peter Walker, Travellers Rest, PEI
Image-24 resized



From a collection of photographs from Peter Walker, Travellers Rest, PEI
Image-25 resized



From a collection of photographs from Peter Walker, Travellers Rest, PEI
Image-29 - resized



The End Result

A sample thumbnail



IPTC
caption

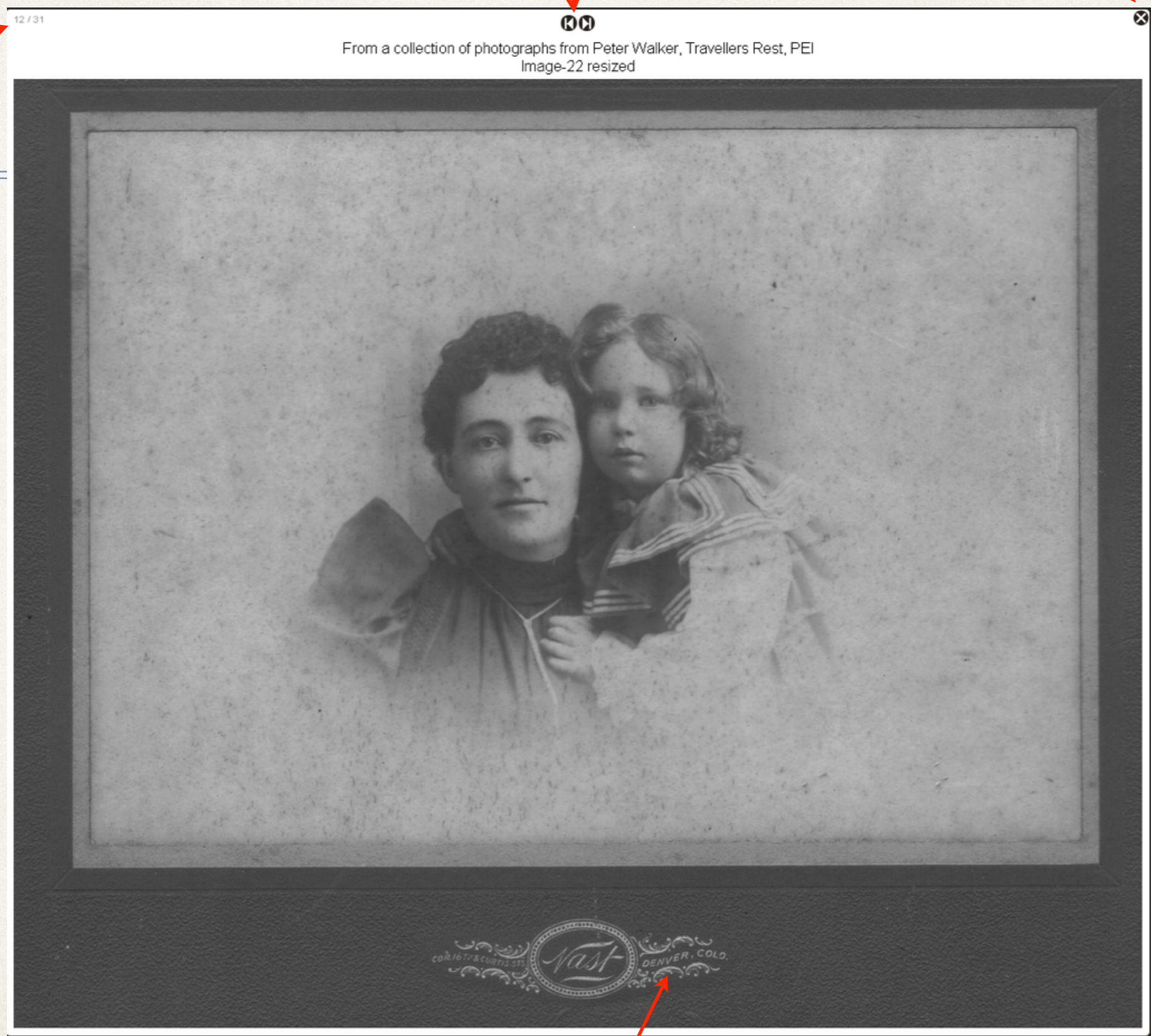
File name

Click here or the
thumbnail to view the
full sized image.

Choose to go back or forward in the gallery

Click here to close window

This is image 12 of 31



Photographers often took their studios on the road, or perhaps this family lived in Colorado.

Steps to Create Image Gallery

- ❖ This is a two step process.
- ❖ Firstly, it is necessary to use an image editor.
- ❖ I will describe the steps used for ACDSee Pro 7 (Windows), Adobe Photoshop Lightroom 5 (Windows & Mac) and Aperture 3 (Mac).
- ❖ If necessary, the images are cropped and resized. Depending upon the size of the faces relative to the overall photograph, resize the image to 800-1,200 pixels in the longest dimension.
- ❖ A caption is entered for each photograph.
- ❖ Secondly, the Image Gallery is created in Second Site.

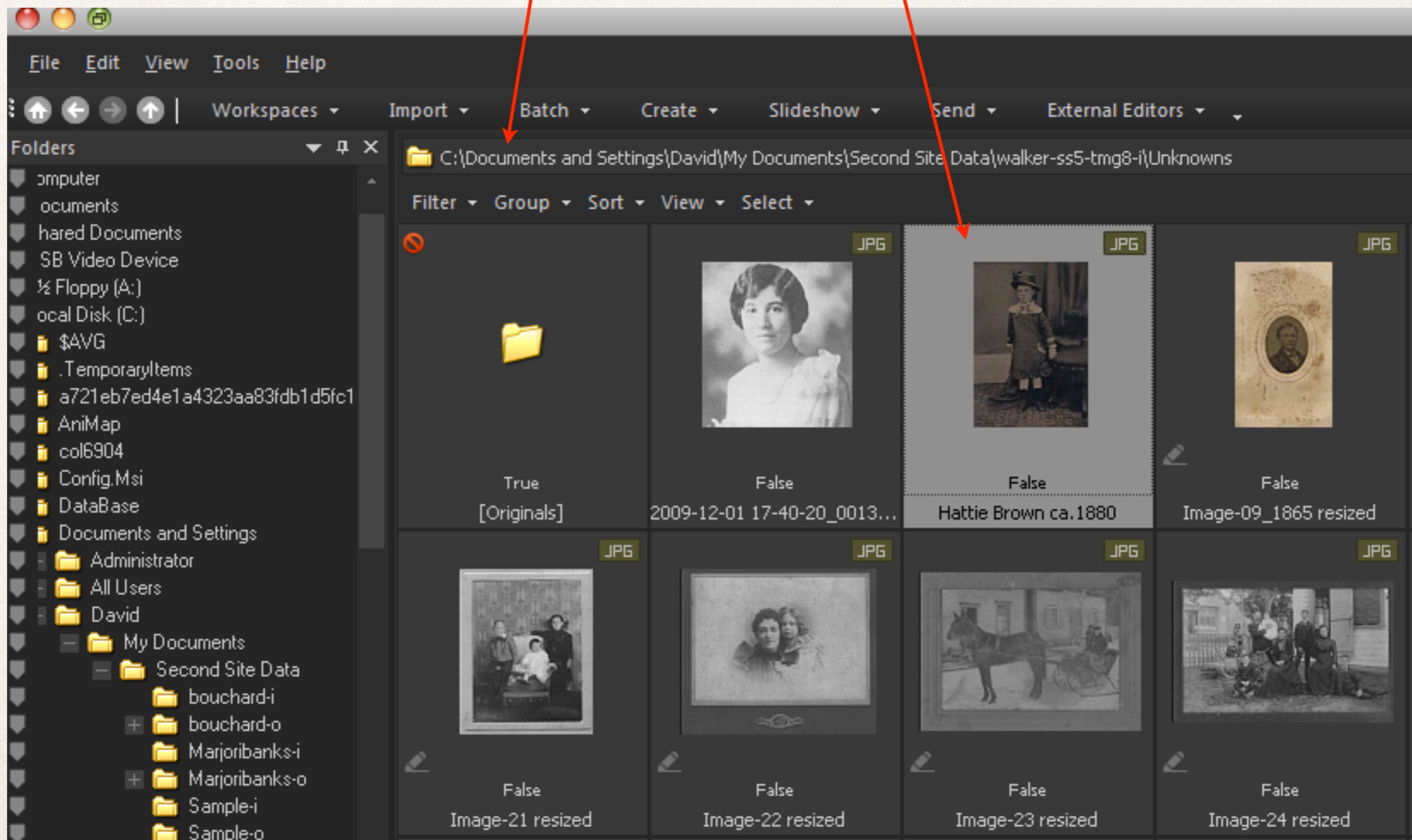
Steps to Create Image Gallery

- ❖ All images that you wish to have displayed in the Image Gallery must be placed in a subfolder of the Input (-i) folder.
- ❖ You must create this subfolder, and it must contain at least one image, before you create the Image Gallery page in Second Site.
- ❖ Each image may have a caption. Second Site records these captions from IPTC (International Press Telecommunications Council) information contained in the metadata of each image file.
- ❖ Multiple image galleries may be added to a single Custom Page

ACDSee Pro 7

Path to the -i subfolder

Highlight the image to be processed



ACDSee Pro 7

[-] IPTC

Content

Title

Headline

Description

Description Writer

Keywords

IPTC Subject Code

Contact

Creator

Job Title

Address

City

State/Province

Postal Code

Country

Phone(s)

Email(s)

Web URL(s)

Copyright

Copyright Notice

Rights Usage Terms

Image

Intellectual Genre

IPTC Scene Code

Location

City

State/Province

Country

Country Code

Status

Job Identifier

Instructions

Source

Credit Line

[+] EXIF

[+] ACDSee Metadata

Metadata Organize File

Properties - Metadata Search

Properties - Metadata

1 2 3 4 5

Metadata Presets (Ctrl+M)

Default Metadata View

[-] IPTC

Content

Title

Headline

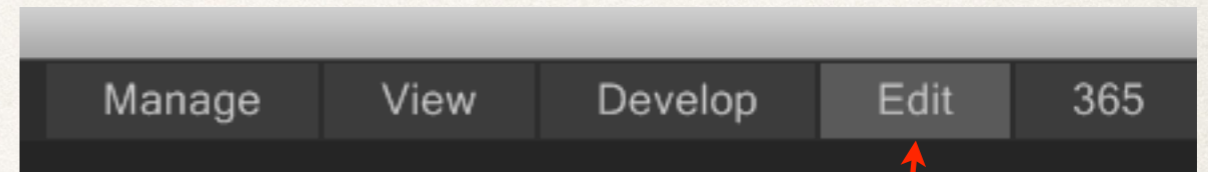
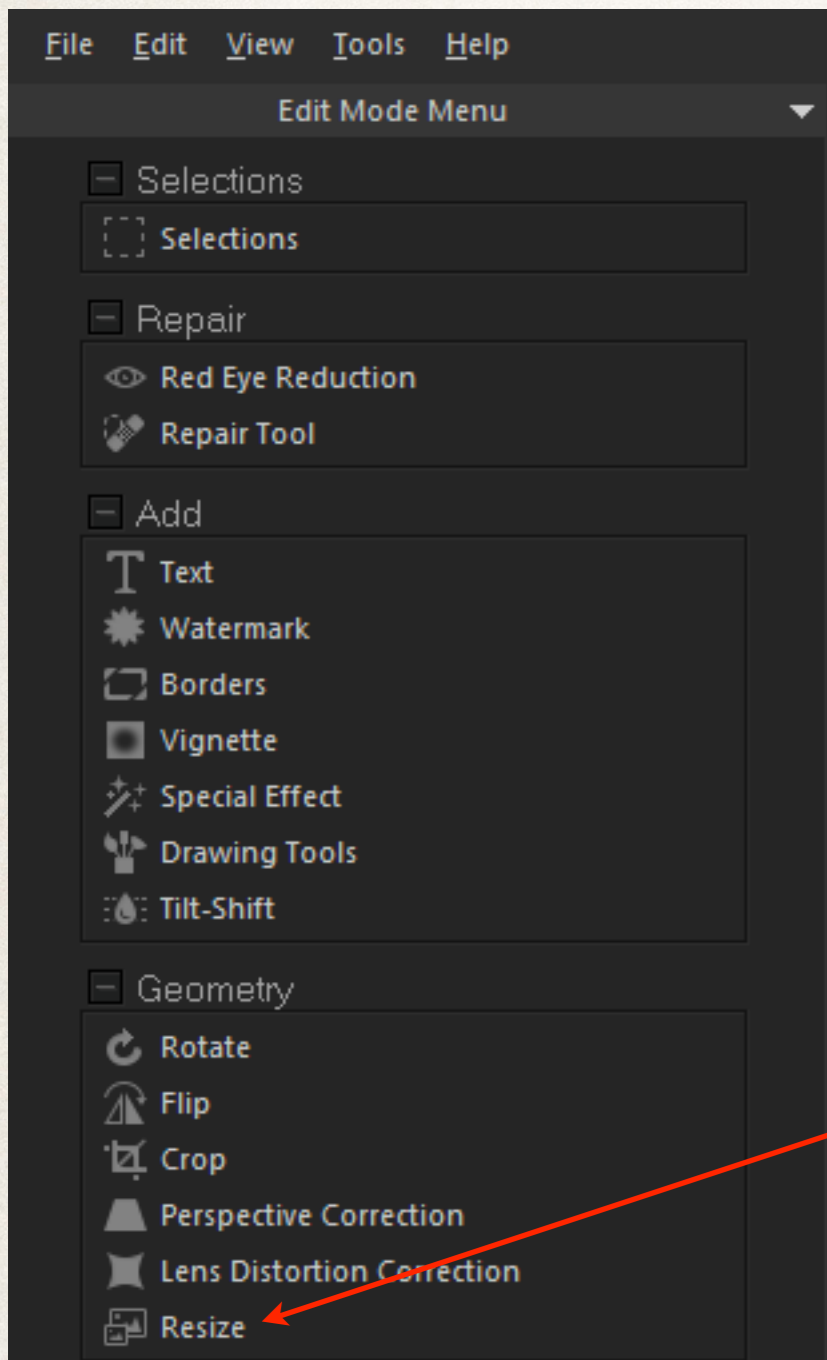
Description

Click Apply

Type Comment text

Select Metadata tab

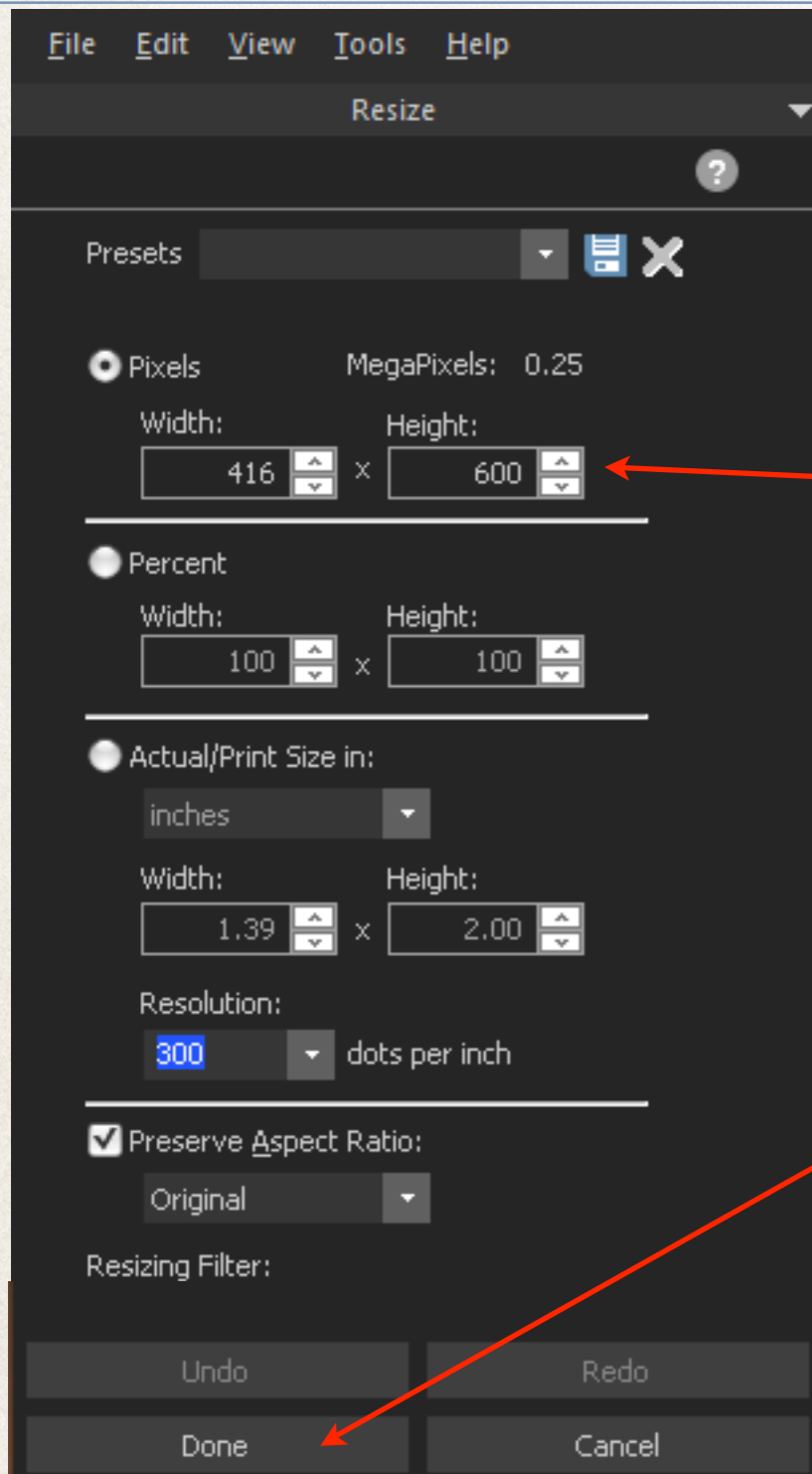
ACDSee Pro 7



Select Edit

Select Resize

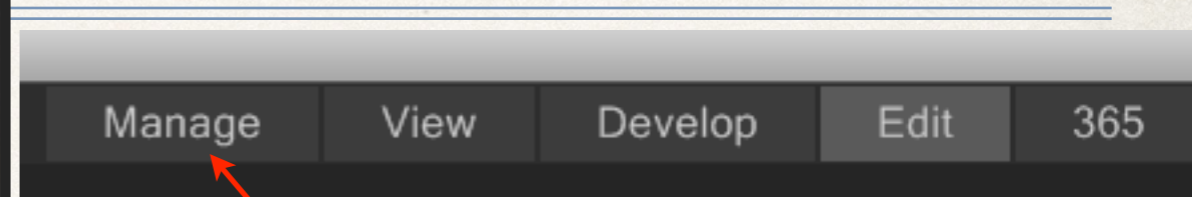
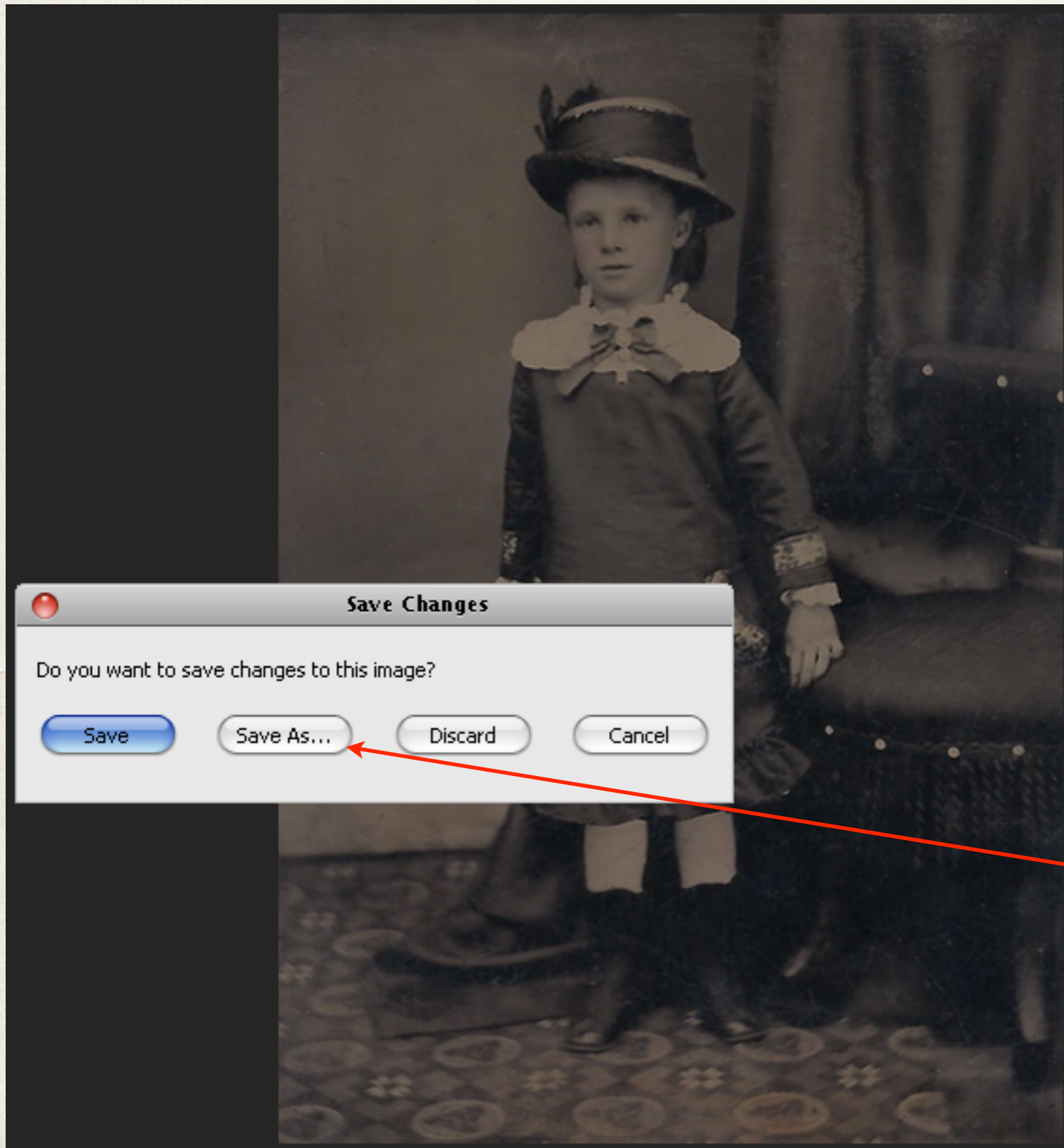
ACDSee Pro 7



Enter desired resize value, longest dimension

Select Done

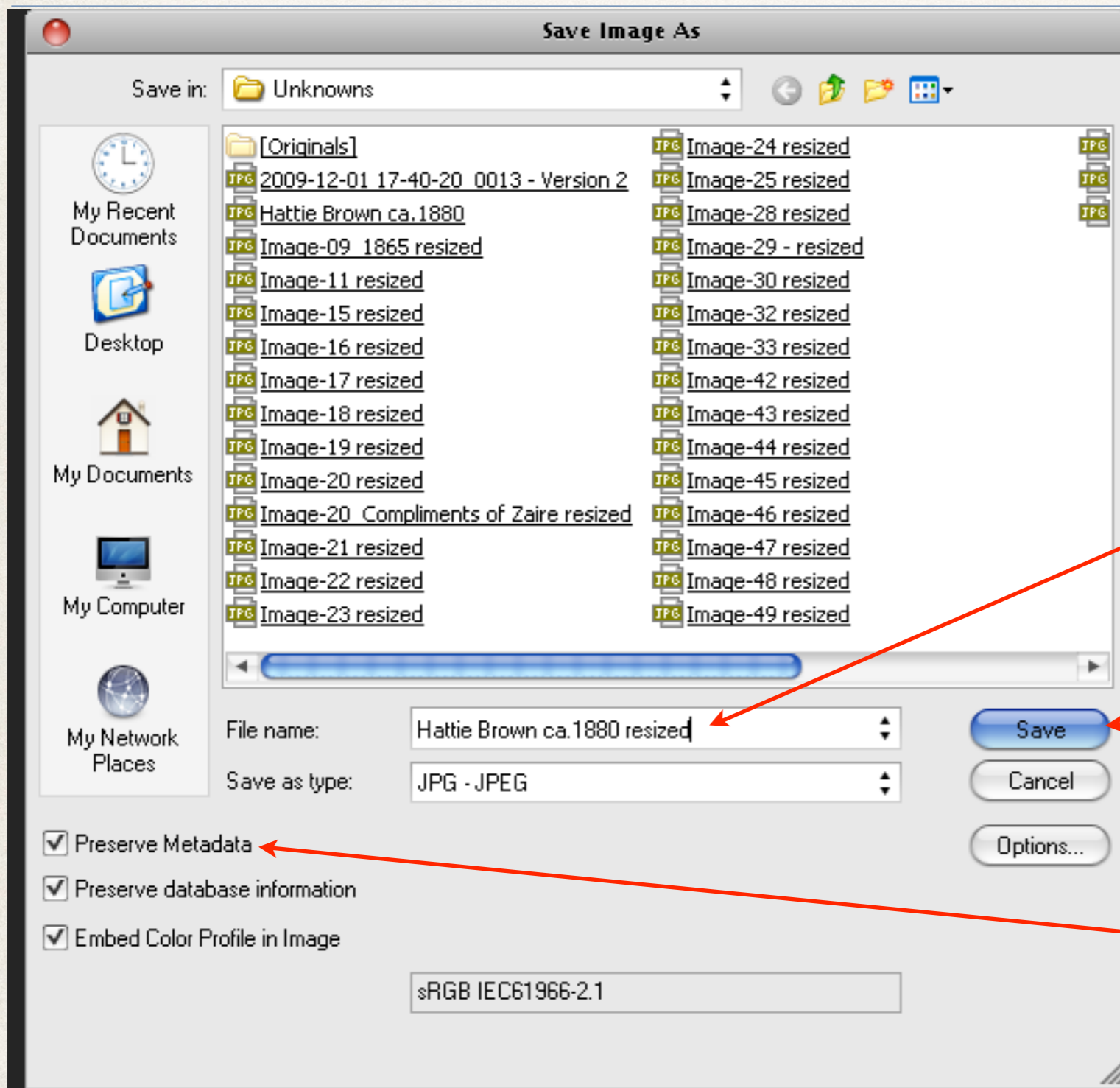
ACDSee Pro 7



Select Manage

Select Save As

ACDSee Pro 7



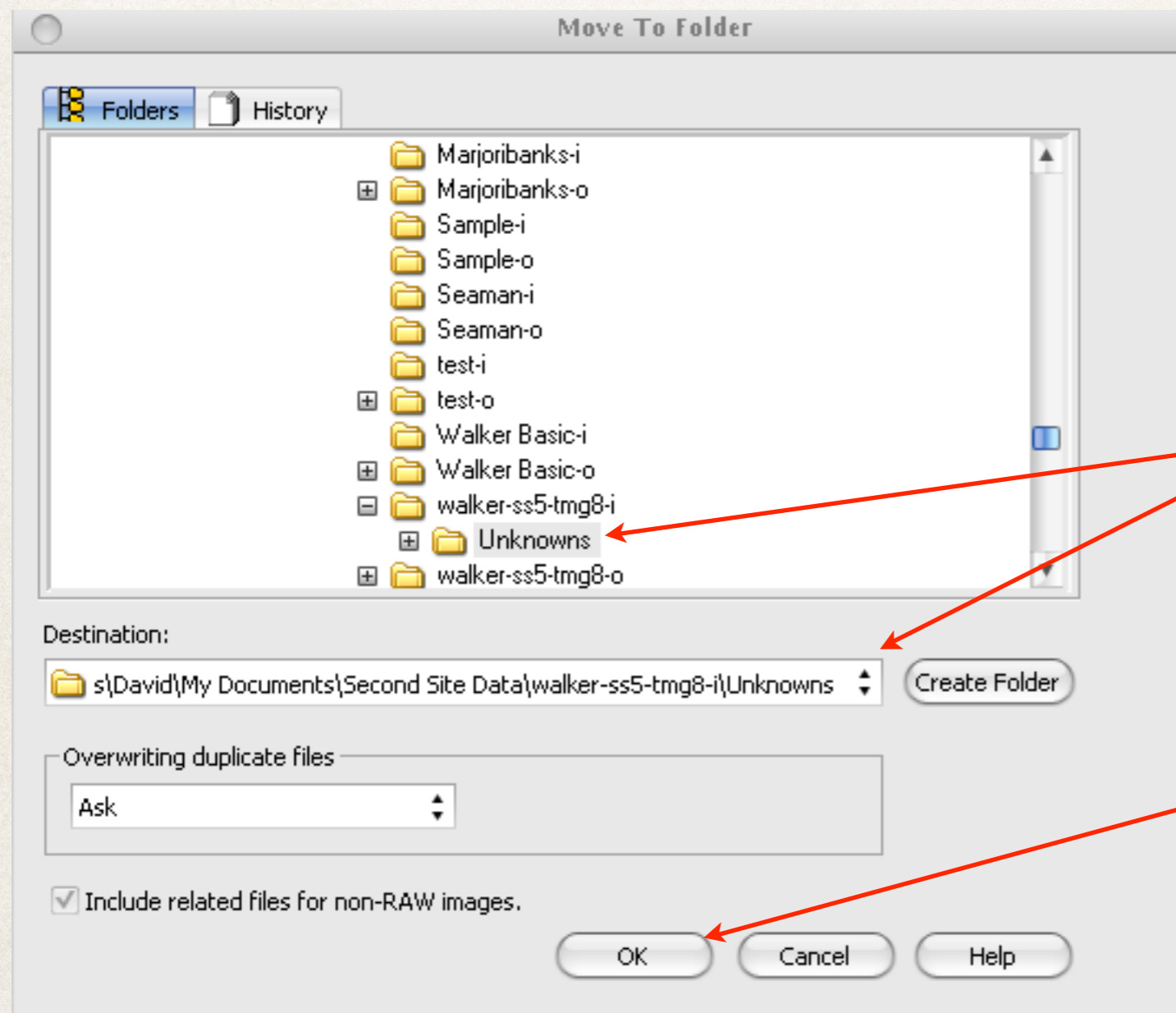
Type a new name, or
append to original

Click Save

Check Preserve Metadata

ACDSee Pro 7

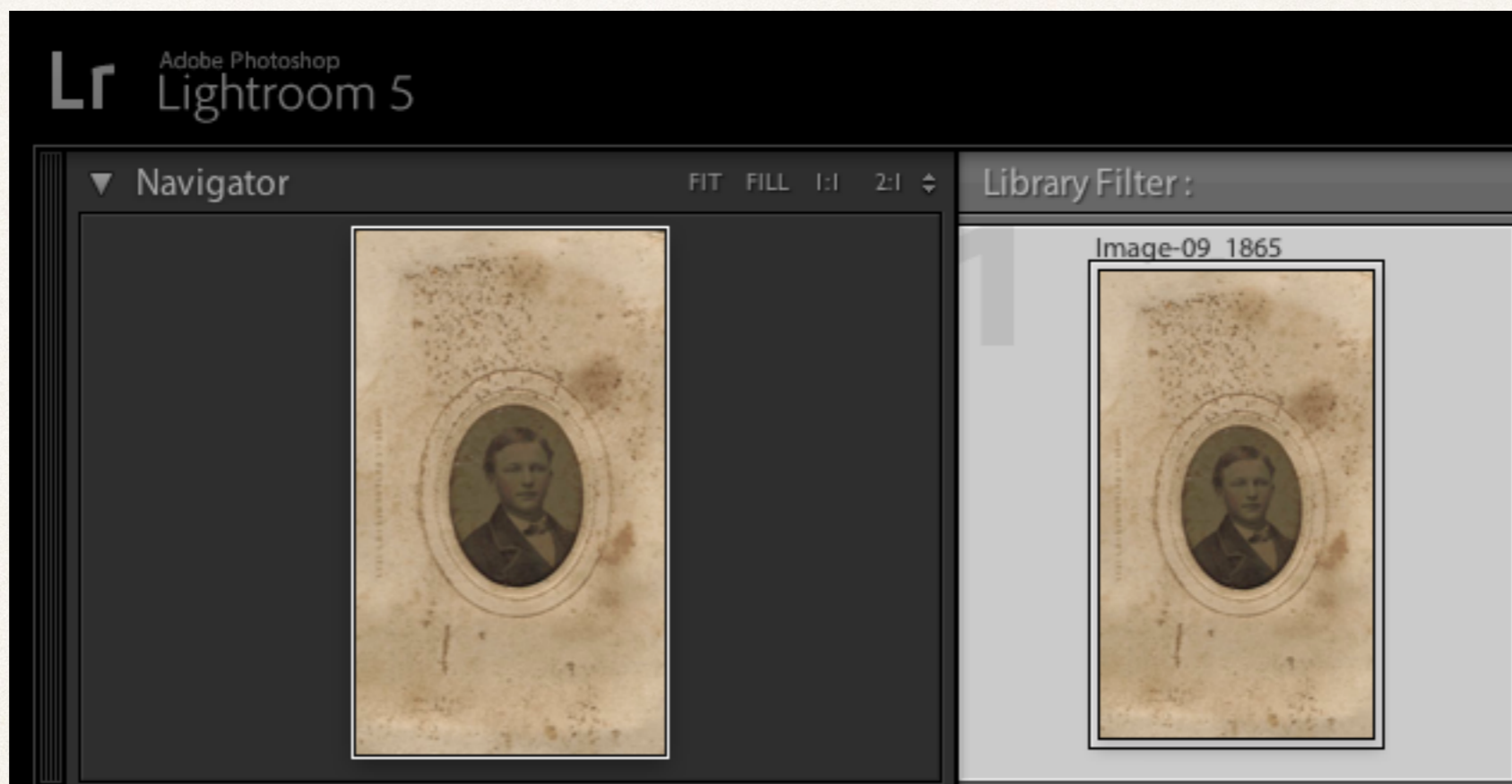
Move the new image to the -i subfolder



Select the -i subfolder

Click OK

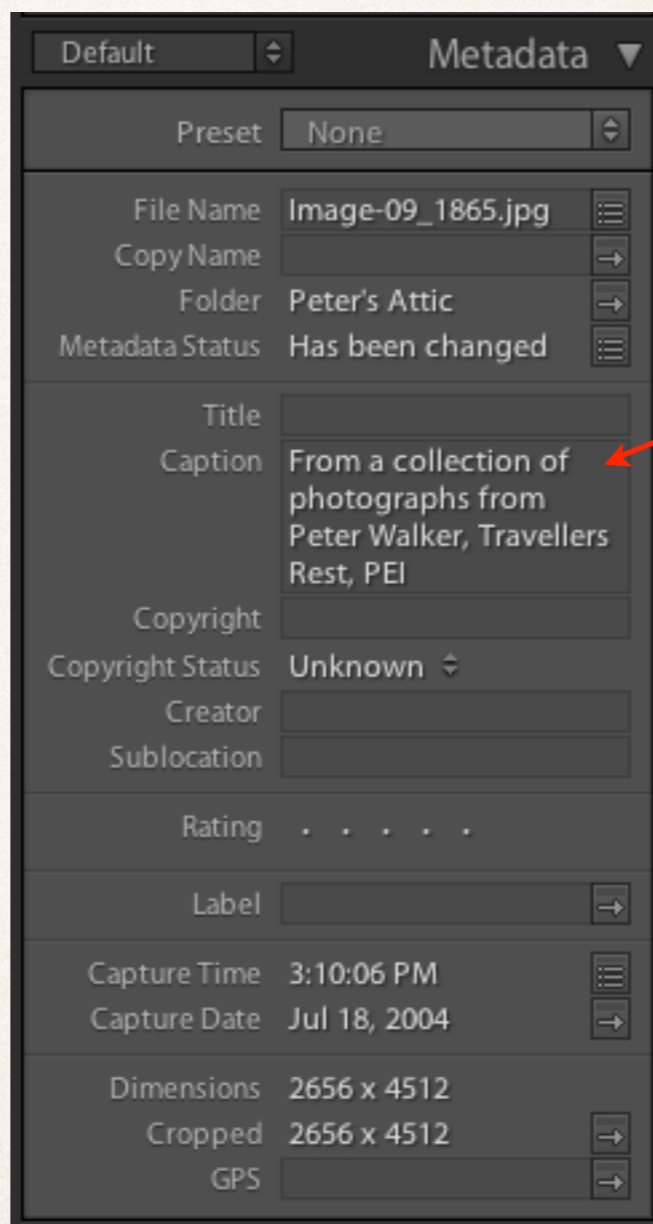
Adobe Photoshop Lightroom 5



Select the image to be processed

Adobe Photoshop Lightroom 5

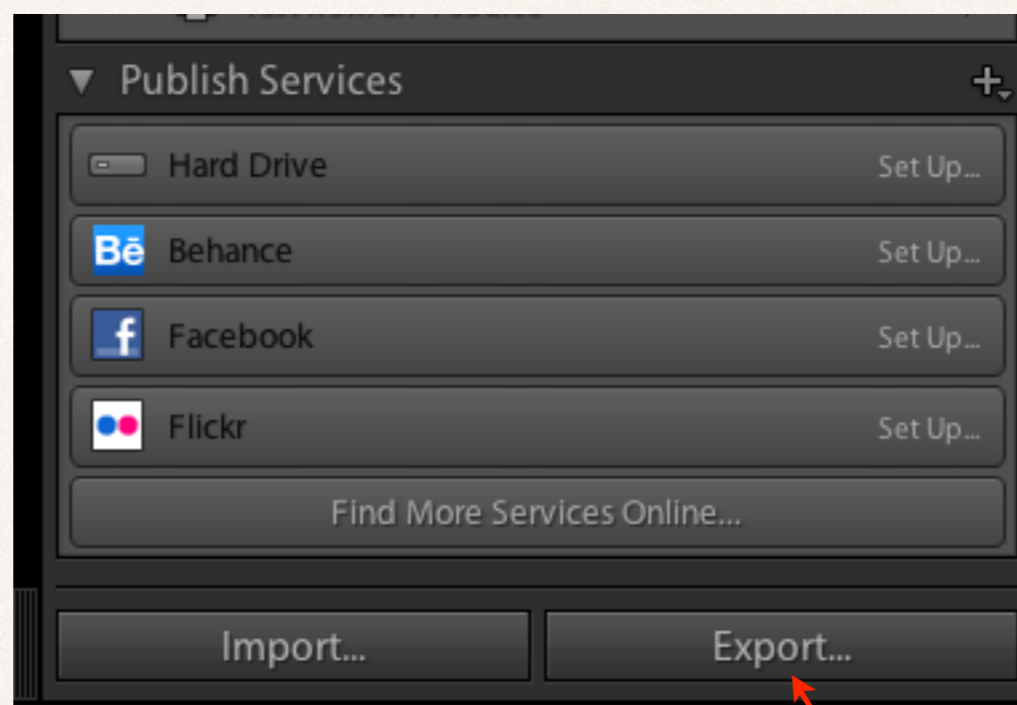
Metadata panel.



Type the caption for the image.

If there are several images to be processed, the caption can be applied to all of them at the same time. Highlight all images that will share the same caption before typing the text.

Adobe Photoshop Lightroom 5



Click Export

Adobe Photoshop Lightroom 5

Export One File

Export To: Hard Drive

Preset: Lightroom Presets
User Presets
Desktop Temp

Export One File

▼ Export Location

Export To: Specific folder

Folder: /Users/David/Documents Choose...

Put in Subfolder: Add to This Catalog Add to Stack: Below Original

Existing Files: Ask what to do

▼ File Naming

Rename To: Custom Name

Custom Text: Example: Image-09_1865.jpg Start Number: Extensions: Lowercase

▶ Video

▶ File Settings JPEG (100%) / sRGB

▼ Image Sizing

Resize to Fit: Width & Height Don't Enlarge

Add Remove

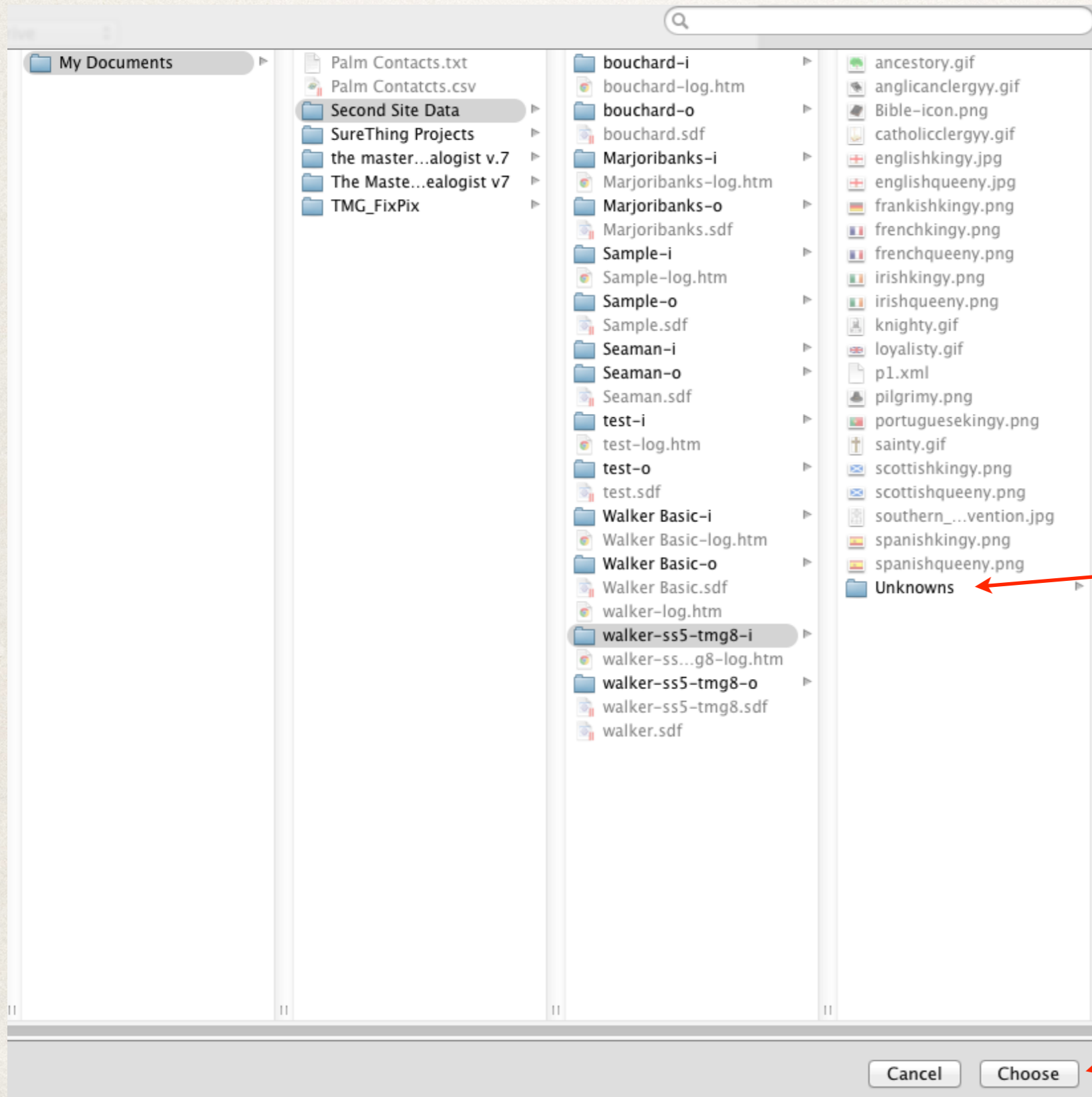
Plug-in Manager... Cancel Export

Select Specific Folder

Select Choose

If you intend to repeat this process often, you may wish to create a User Preset

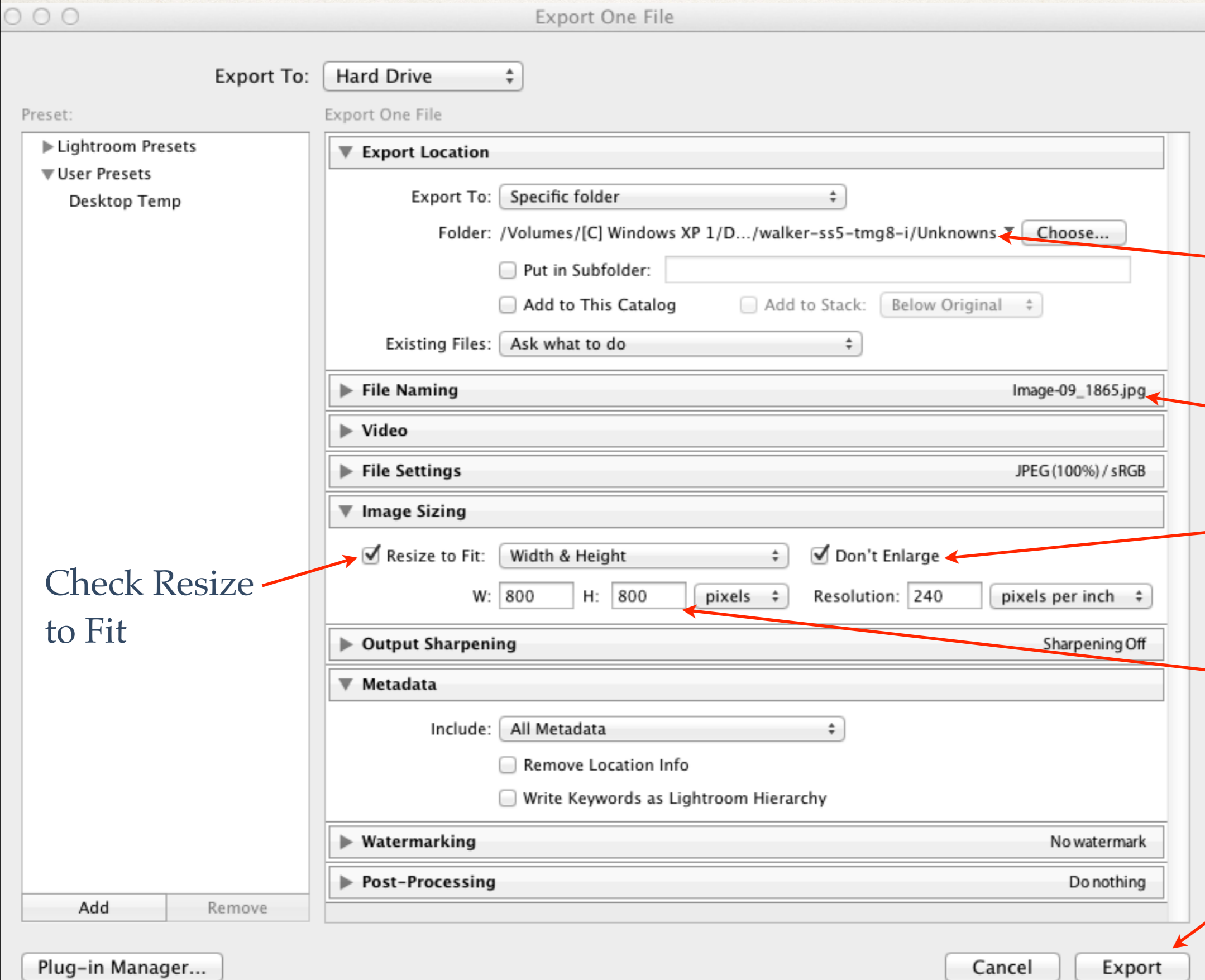
Adobe Photoshop Lightroom 5



Select the -i subfolder

Click Choose

Adobe Photoshop Lightroom 5



The -i subfolder is displayed

Maintain the original file name

Check Don't Enlarge

Set resize values

Click Export

Check Resize to Fit

Cancel Export

Apple Aperture 3

The screenshot shows the Apple Aperture 3 interface. The top menu bar includes Inspector, Import, New, Name, Keywords, Share, Email, Facebook, and Flickr. The main window is divided into three panes: Library, Info, and Adjustments. The Info pane is active, showing metadata for the selected image. The Content section is highlighted with a red box, and a red arrow points to the Info tab. Another red arrow points to the Caption field in the Content section. A third red arrow points to the Caption field in a zoomed-in view of the Content section. The photo of a woman with a dog is visible in the background.

Having chosen an image, click the Info tab

Type an appropriate caption

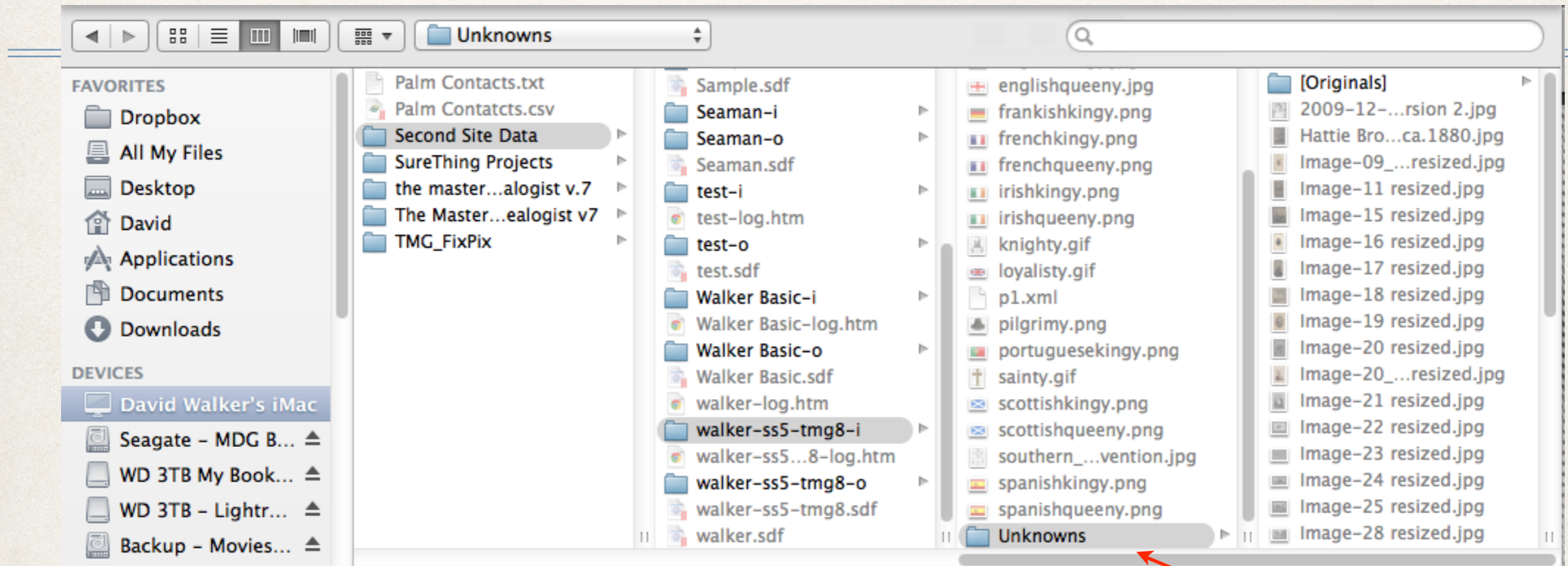
Content
Headline:
Caption: Possibly a Wallace descendant from Prince Edward Island.

Content
Headline:
Caption: Possibly a Wallace descendant from Prince Edward Island.

Caption: Possibly a Wallace descendant from Prince Edward Island. Version Name: 2009-12-01 17-40-20_0013 - Version 2 Date: 12/1/2009, 5:40:24 PM EST File Size: 2.62 MB
Project Path: Exhibits > Wallace Photos > Items From Wallace Photos

Apple Aperture 3

From the File drop down menu, select Export > Version



Select the size from the Export Preset list

Export Preset: JPEG - 800x800

Subfolder Format: None

Custom Subfolder Name: Enter folder text here

Keep the same name or rename

Name Format: Current Version Name

Custom Name: Enter name text here

File Name Example: 2009-12-01 17-40-20_0013 -

Show alert when finished

Locate the -i subfolder

Click Export Versions

New Folder

Cancel

Export Versions

Use a Mix of Image Editors

Edited with Aperture 3 (Mac)

Edited with Lightroom 5 (Mac)

Edited with ACDSee Pro 7 (Windows)

IPTC Comment

File name



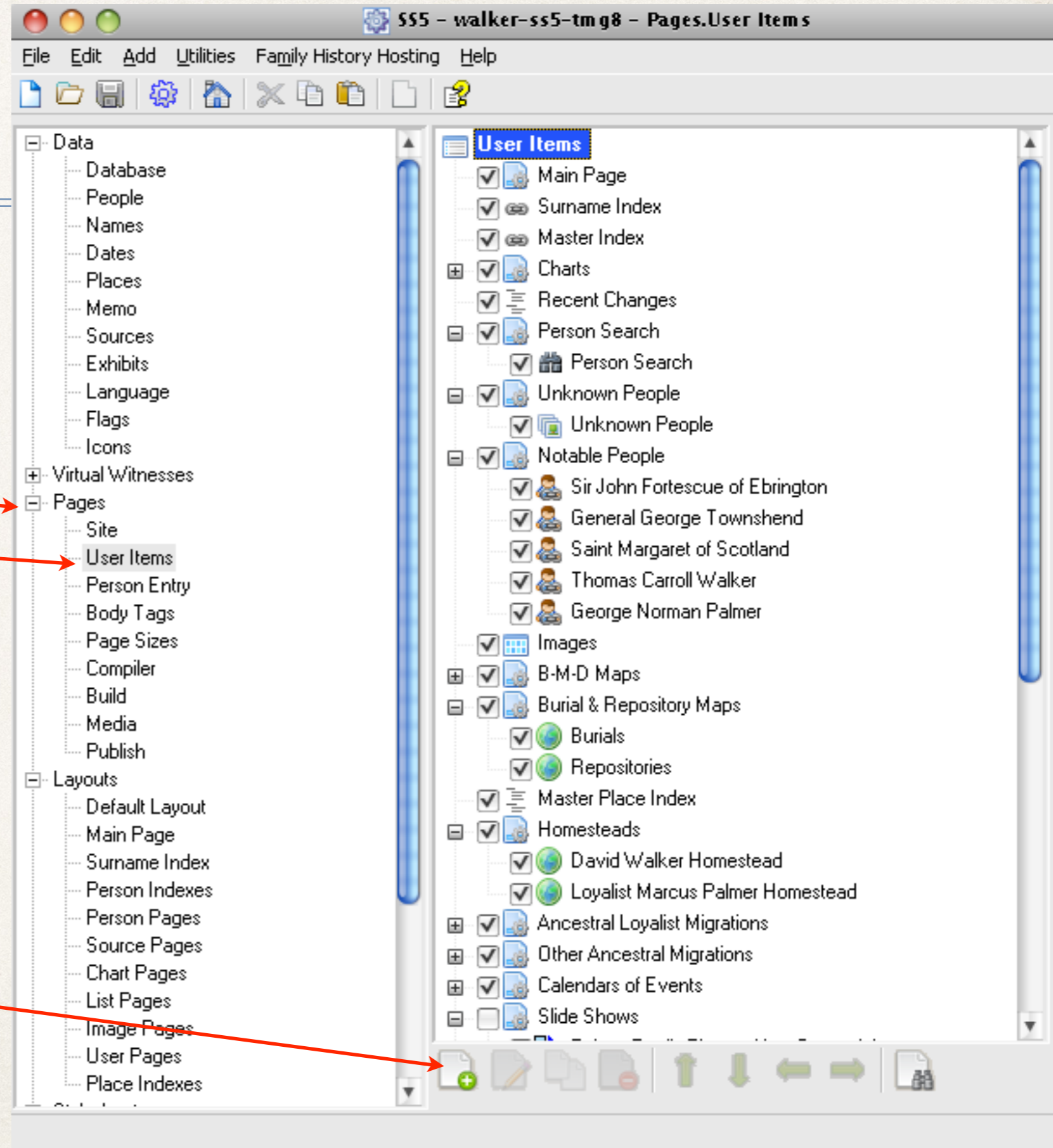
End of Image Editing

- ❖ Run Second Site
- ❖ Open the project's .sdf file

Second Site

Select Pages
User Items

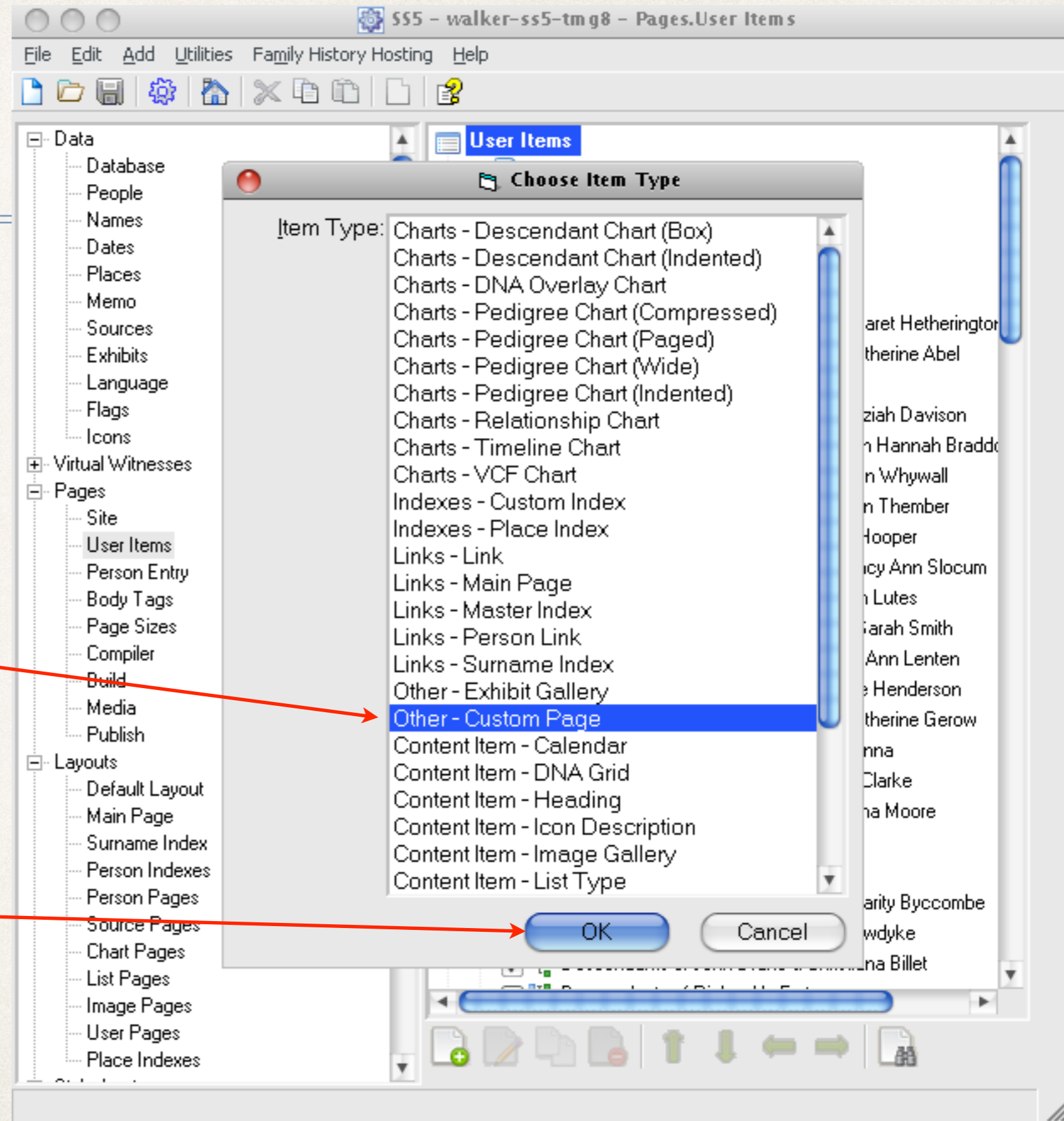
Click Add Item



Second Site

Select Other - Custom Page

Click OK

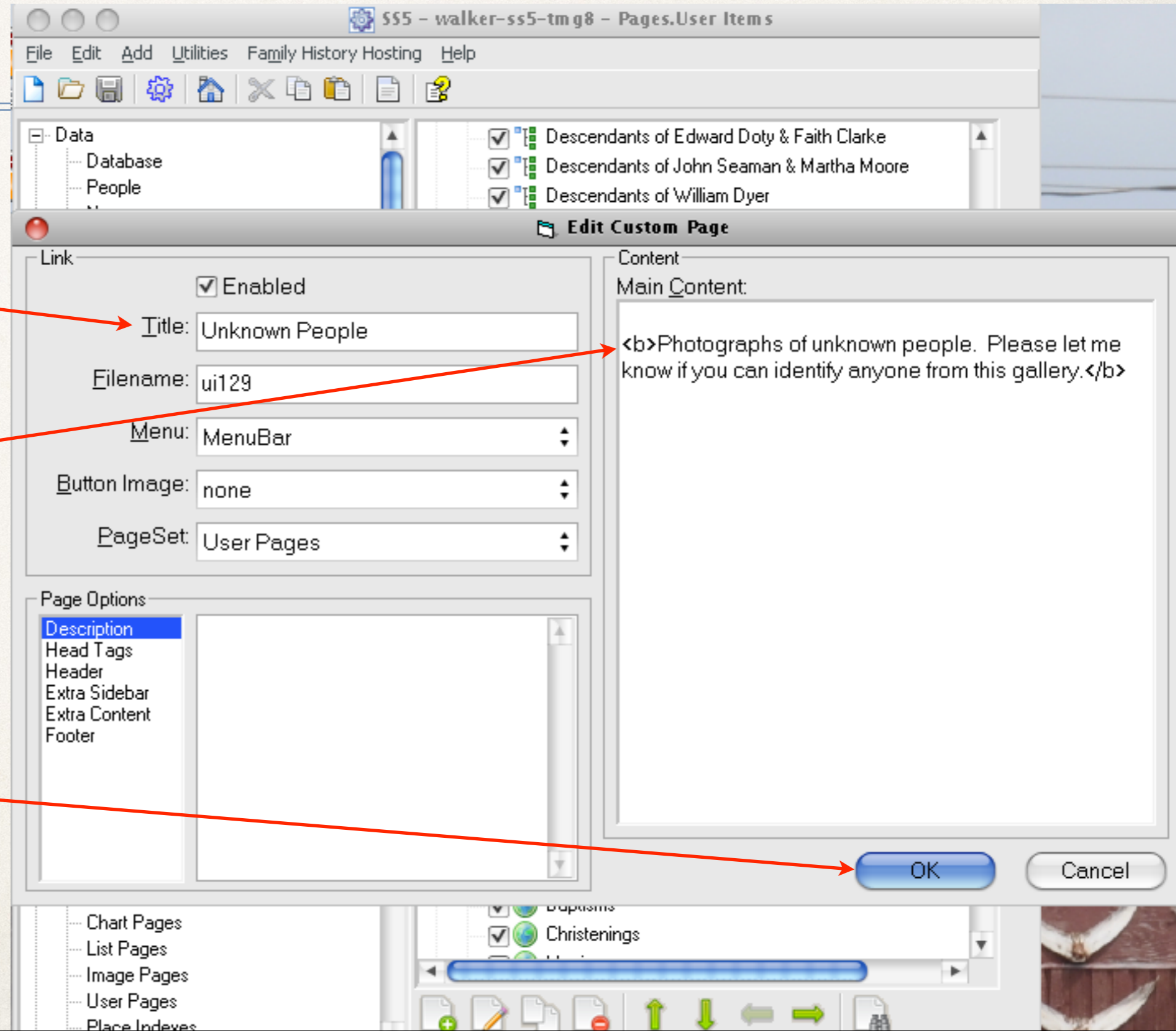


Second Site

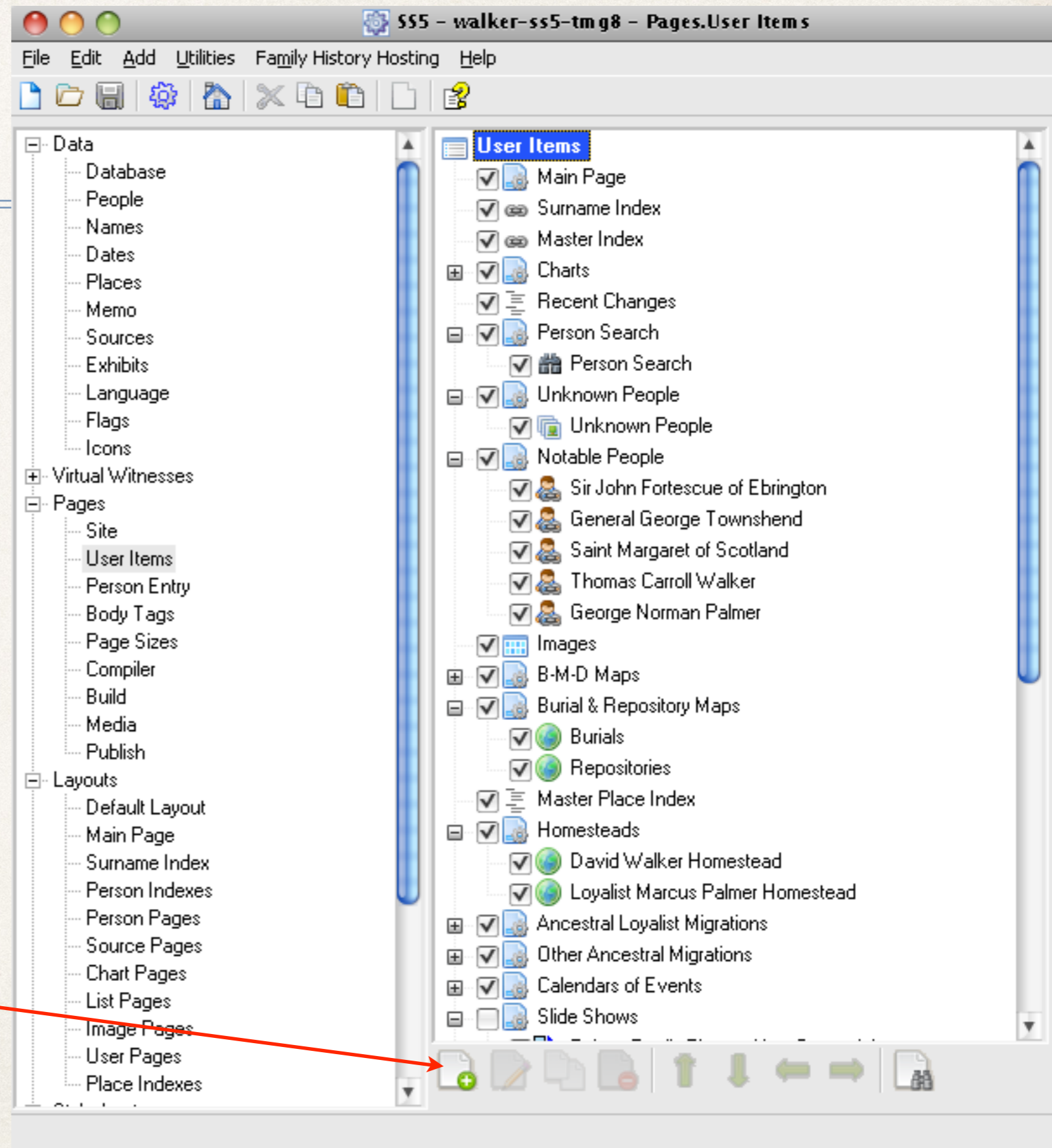
Enter a title

Type a brief description for the Image Gallery. This will appear at the top of the thumbnails.

Click OK

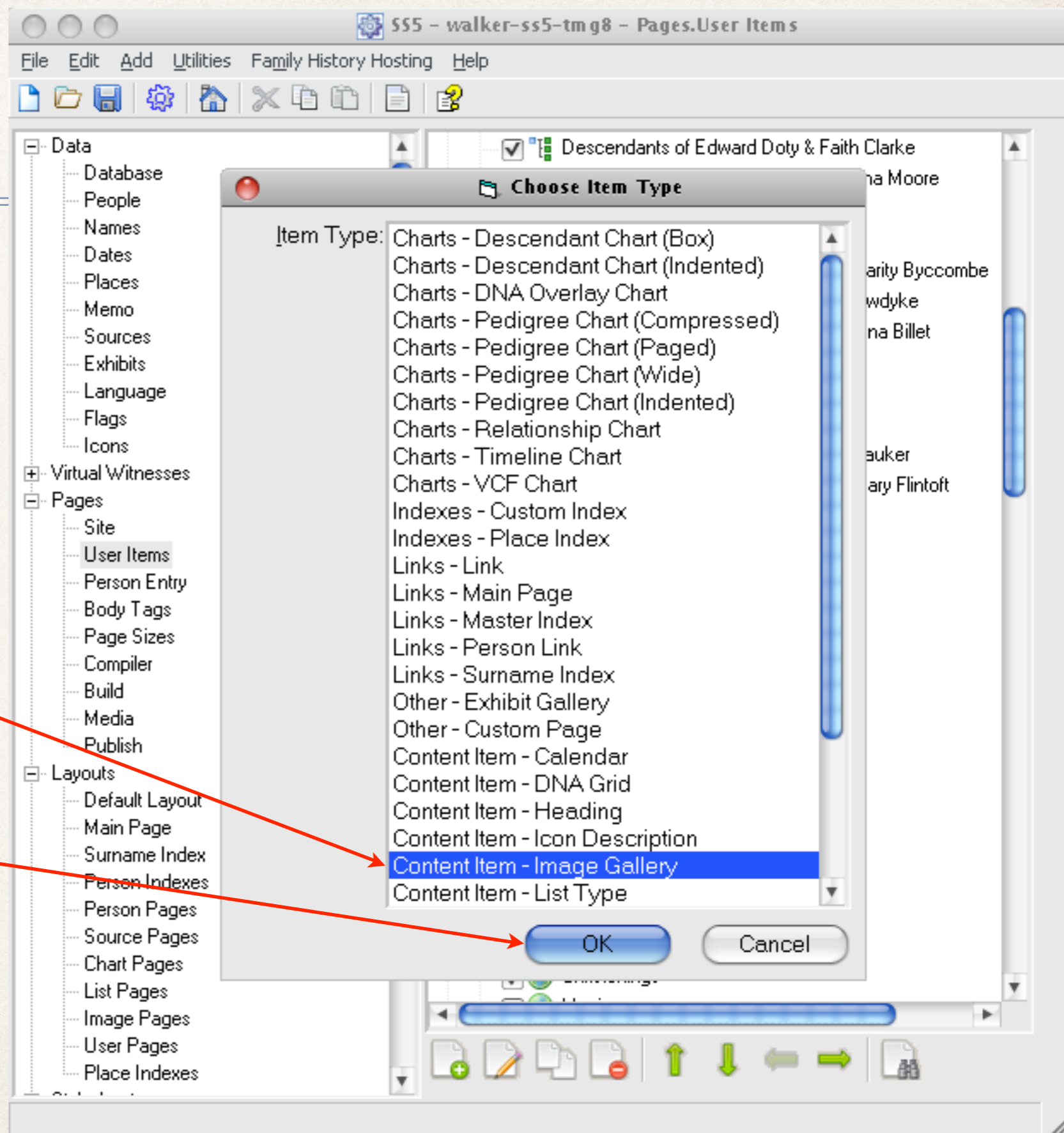


Second Site



Click Add Item

Second Site



Select Content Item - Image Gallery

Click OK

Second Site

Type a Title

Select the -i subfolder

Check all boxes

Change Dimensions from default:

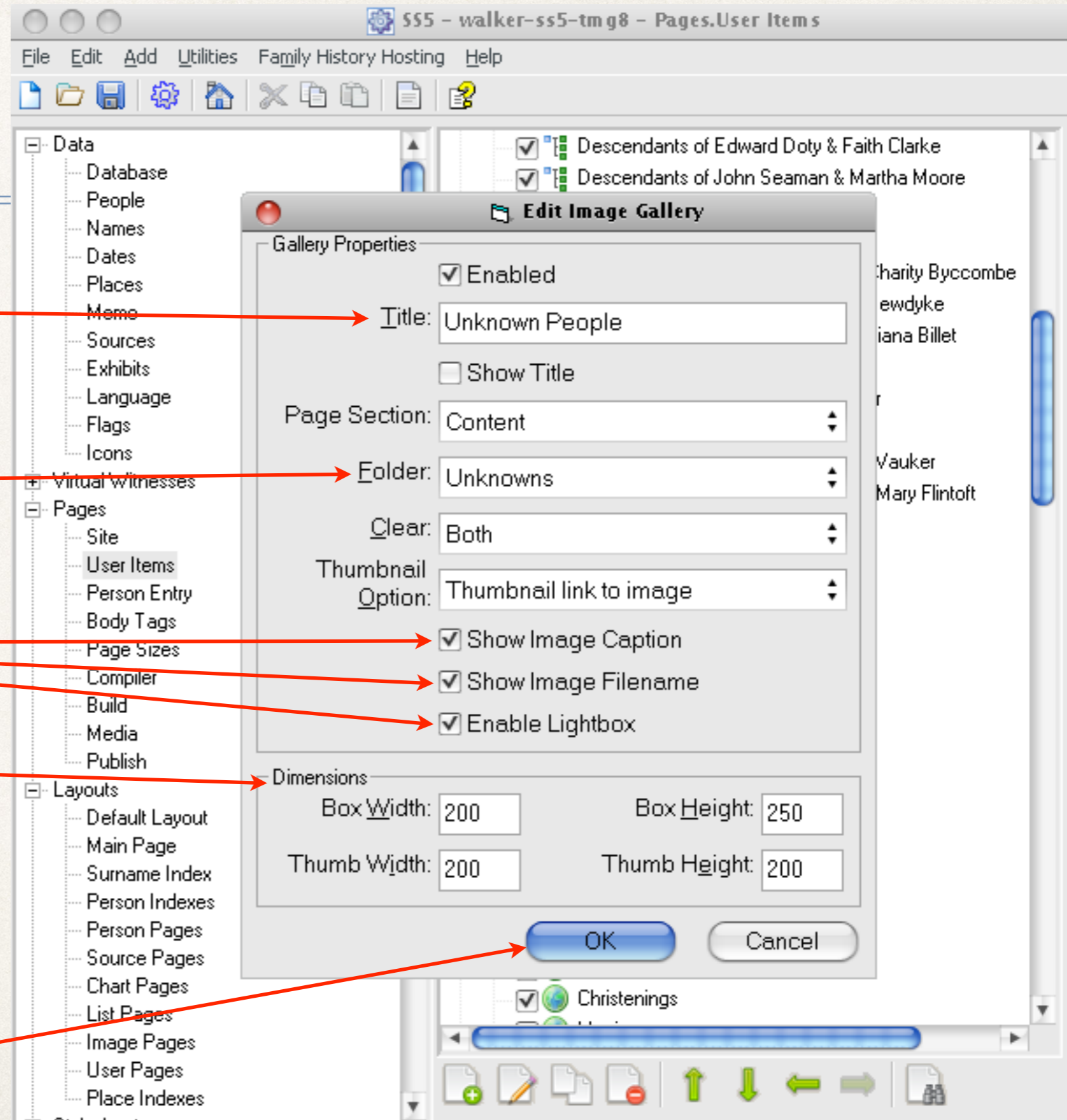
Box Width = 200

Box Height = 250

Thumb Width = 200

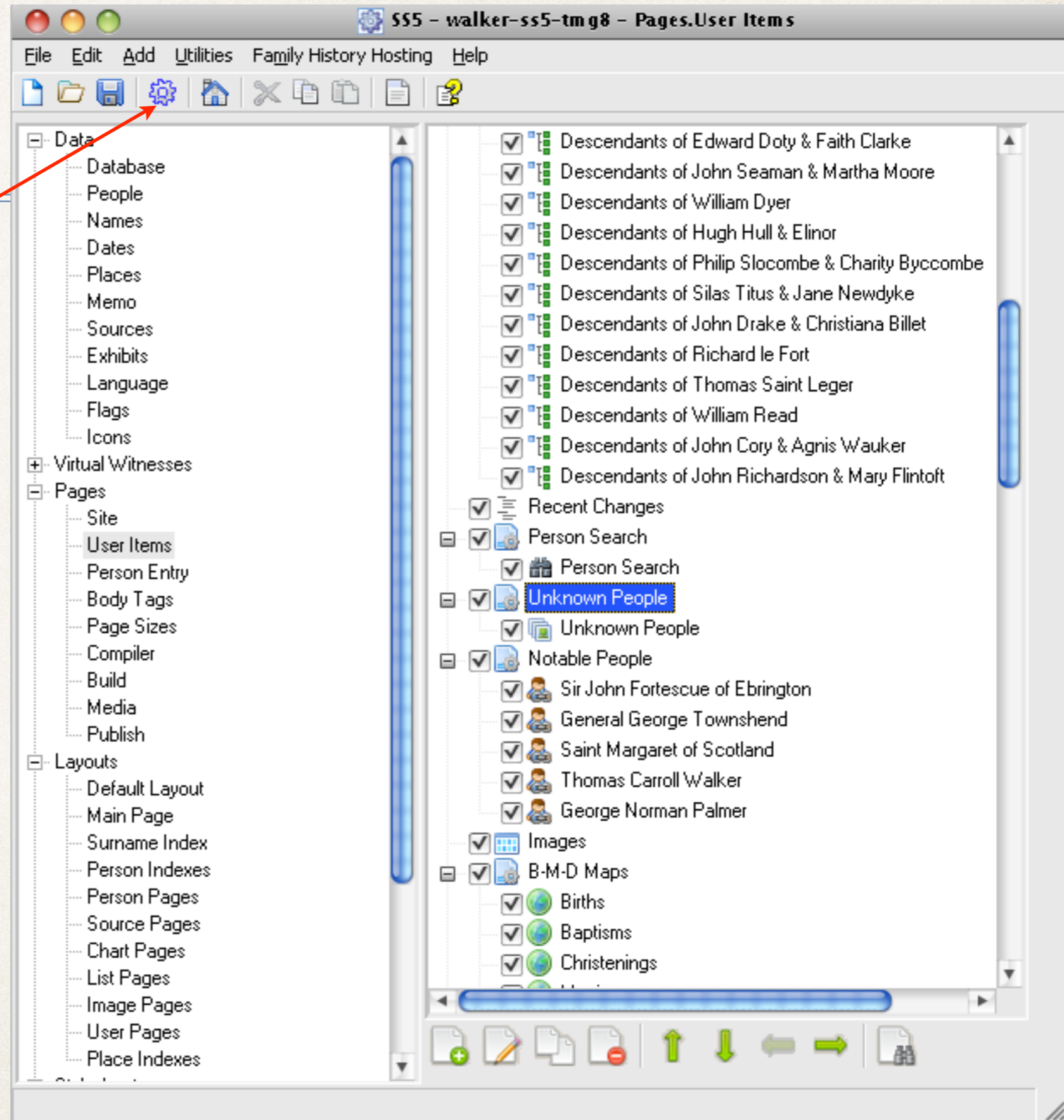
Thumb Height = 200

Click OK



Second Site

Click Create Site.
When complete,
click Browse Site.



The End Result

New link to the new Image Gallery. Clicking on this link will display an image gallery of unknown people.



Ancestral Trails Genealogy Web Site

An ongoing family history research project by David A. Walker (david@ancestraltrails.ca)



[Recent Changes](#) [Person Search](#) [Unknown People](#) [Notable People](#) [B-M-D Maps](#) [Burial & Repository Maps](#) [Homesteads](#) [Ancestral Loyalist Migrations](#) [Other Ancestral Migrations](#) [Calendars of Events](#) [Repositories](#) [Icon Description](#)

The main focus of study is within the three maritime provinces of Canada, namely Prince Edward Island, New Brunswick and Nova Scotia, as well as New England and the British Isles.

If you are interested in viewing locations for various events, such as births, baptisms, marriages and burials, click on the Repositories link above

Major surnames in this research include Blanchard, Braddock, Brown, Cairns, Cannon, Clark, Coffin, Coffyn, Converse, Cory, Corey, Coy, Courtenay, Crawford, Doty, Drake, Durgan, Dyer, Fortescue, Gibson, Glover, Grenville, Hooper, Hull, Marchbank, Palmer, Read, Robbins, Seaman, Slocum, Titus, Townsend, Townshend, Wallace, Walker, White, Wright.

Loyalist family names include Palmer (Marcus Sr.), Clark (John Sr.), Seaman (Jacomiah), Crawford (John Jr.), Slocum (Ebenezer), Cory/Corey (Ebenezer), Coffin (Elisha), Converse (Jesse), Cottle (Nathaniel Bradford Sr.), Hooper (Thomas Sr.), Robins (Richard), Braddock (Samuel) and Wiggins (Jacob F.).

New items added include maps showing locations of births, marriages, deaths, burials & repositories, place index, latest updates, homesteads, migration routes and notable people. Check back often to view new additions.

Please report any errors or suggested additions. **Living people are not shown on this site.**

Compiler: **David Walker**, Edwards, Ontario, Canada

Site updated on 3 Jan 2014; 52,534 non-living people

The End Result

This is the top part of the image gallery.

Ancestral Trails Genealogy Web Site

An ongoing family history research project by David A. Walker (david@ancestraltrails.ca)

Unknown People

[Home](#) [Surnames](#) [Index](#) [Charts](#) [Photos](#) [Places](#)

[Recent Changes](#) [Person Search](#) [Unknown People](#) [Notable People](#) [B-M-D Maps](#) [Burial & Repository Maps](#) [Homesteads](#) [Ancestral Loyalist Migrations](#) [Other Ancestral Migrations](#) [Calendars of Events](#) [Repositories](#) [Icon Description](#)

Photographs of unknown people. Please let me know if you can identify anyone from this gallery.



Proof that it's worth doing.....

One day after I refreshed my web site, which now includes the new image gallery, someone in Prince Edward Island enlightened me with the identities of people in 6 of the 31 photographs.