

Creating a Repositories “Person” for TMG and Second Site 3 by David Walker

Ottawa TMG Users Group

13 September 2009

Introduction:

The purpose of this exercise is twofold:

1. To create artificial tags that will display exhibits and GPS coordinates for a variety of repositories, such as archives, museums, ancestral homes and cemeteries.
2. To view the repositories in Second Site 3 in two ways, as a person view with displayed exhibit and as a map showing the geographic location of each repository.

Create a Repositories Person in TMG:

1. Add > Unrelated. Enter only the surname, as “Repositories”. No other information is entered.

Create a New Tag:

2. Create a new tag, Add Tag (F4).
 1. In the Label and Past tense fields enter “Repository”.
 2. The Abbreviation field will default to rep.
 3. Set the Tag Group as “Other event”.

The screenshot shows the 'Tag Type Definition' dialog box. At the top, 'Label : Repository' and 'Language : English (U.S.)' are set, with an 'Active' checkbox checked. Below are three tabs: 'General', 'Roles and Sentences', and 'Other'. The 'General' tab is selected, showing fields for 'Label : Repository', 'Past tense : Repository', 'Abbreviation : rep.', and 'Default Style : Use Data Set default style'. On the right, a 'Tag Group' list includes options like Name, Parent/child relationship, Birth, Death, Burial, Marriage, Divorce, History, Address, and 'Other event', which is selected with a radio button. At the bottom are 'OK', 'Cancel', and 'Help' buttons.

- Click on the Roles and Sentences tab. In the Male sentence structure window, enter “Information was gathered at [L]”, or whatever alternate text you wish.

The screenshot shows the 'Tag Type Definition' dialog box with the 'Roles and Sentences' tab selected. The 'Label' is 'Repository' and the 'Language' is 'English (U.S.)'. The 'Active' checkbox is checked. The 'Role' list on the left contains 'Principal' and 'Witness'. The 'Male sentence structure' field contains 'Information was gathered at [L]'. The 'Female sentence structure (if different)' field is empty. The 'This role is appropriate for' section has 'Sex' set to 'Any', 'Minimum age' set to 'Any', and 'Maximum age' set to 'Any'. The 'Rebuild all sentences' button is visible. At the bottom are 'New', 'Edit', 'Delete', 'OK', 'Cancel', and 'Help' buttons.

Tag Type Definition

Label : Repository Language : English (U.S.) ☒ Active

General Roles and Sentences Other

Role :

Principal
Witness

New Edit Delete

Rebuild all sentences

Male sentence structure :
Information was gathered at [L]

Female sentence structure (if different) :

This role is appropriate for : Sex : Any
Minimum age : Any
Maximum age : Any

OK Cancel Help

- Click OK
- The new Repository tag is viewed in the Tag Type List.

Adding repository tags:

1. Select Add > Add Tag (F4)
2. Scroll down and select Repository
3. Use the Detail window to enter the name of the repository, such as Provincial Archives of New Brunswick. Continue with the usual entries for City, County, State/Province and Country. In the LatLong field enter the coordinates for the repository (I suggest the main entrance of a building, cemetery etc. Use the format recommended by John Cardinal, in the form that looks like 46.812367~-64.068633
4. Add an exhibit for the tag (I suggest reducing the image size to a maximum of 600 pixels. In the Description window add a caption that will appear below the image.
5. You may wish to use a source entry for these tags. I use one I call GPS Database. Within the Citation Detail enter whatever information you wish (I reference my notebook and page number for the data written for each repository). Enter a surety value of 3 for the Place.

Tag Entry

Tag type: Repository

Principal: 96500, 0

Date:

Sort date: 06 Jan 1006

Place style: U.S. StandardPlace

Addressee:

Country: Canada

Detail: Fernwood Cemetery, Burnside Rd

City: Port Elgin

County: Westmorland County

State: New Brunswick

Postal:

Phone:

LatLong: 46.063633~-64.090317

Temple:

Memo

Sentence

OK Cancel Help

Primary name

Primary name

No more witnesses

1 citation

3388 GPS Database MGT 2003, p. 7 3

Sorting the Repository tags:

Use the Sort Date feature for each tag to place them (more or less) in alphabetical order. I use the following procedure. Use the sort date 01 Jan 1001 for those repositories beginning with the letter 'A', 02 Jan 1002 for those beginning with the letter 'B', and so on.

Details

Person

Family

Tree

Type	Name	Type	Value
Name	Repositories (96500)	Age	Dec'd
Father		Children	0
Mother		Last edited	14 Sep 2009

Type	Date	Name/Place	Age	M	S	W	E	T
Relation >		no relationship with David Arthur Walker (1) b. 21 Jun 1944						
Repository	---	Alberton Museum, Alberton, Prince County, Prince Edward Island,				✓		
Repository	---	Amherst Cemetery, Cumberland County, Nova Scotia, Canada,				✓		
Repository	---	Bedeque Cemetery, Prince County, Prince Edward Island, Canada,				✓	✓	
Repository	---	Baptist Cemetery, Upper Gagetown, Queens County, New Brunswick,				✓	✓	
Repository	---	Burton Courthouse, Oromocto, Queens County, New Brunswick,				✓		
Repository	---	Central Hampstead Baptist Church Cemetery, Queens County, New				✓	✓	
Repository	---	Cavendish Cemetery, Cavendish, Queens County, Prince Edward				✓	✓	
Repository	---	Cumberland County Museum & Archives, Amherst, Cumberland				✓		
Repository	---	Dotten Family Cemetery, North Wallace, Cumberland County, Nova				✓	✓	
Repository	---	Eptek Art & Culture Centre, Summerside, Prince County, Prince Edward				✓		
Repository	---	Erb's Cove United Baptist Church Cemetery, Queens County, New				✓		
* Repository	---	Elmwood Cemetery, Moncton, Westmorland County, New Brunswick,				✓	✓	
Repository	---	Fairhaven Cemetery, Salisbury, Westmorland County, New Brunswick,				✓		
Repository	---	Free Will Baptist Cemetery, Bristol, Carleton County, New Brunswick,				✓		
Repository	---	Fernwood Cemetery, Burnside Rd., Port Elgin, Westmorland County,				✓	✓	
Repository	---	Free Church of Scotland Cemetery, Cape Traverse, Prince County,				✓	✓	
Repository	---	Geddie Memorial Presbyterian Church Cemetery, New London, Queens				✓	✓	
Repository	---	Gunter Family Cemetery, Upper Gagetown, Queens County, New				✓	✓	
Repository	---	Hillside Cemetery, Springhill, Cumberland County, Nova Scotia,				✓	✓	
Repository	---	John Walker farm, Travellers Rest, Prince County, Prince Edward				✓	✓	
Repository	---	Kirk Hill Cemetery, Sussex, Kings County, New Brunswick, Canada,				✓	✓	
Repository	---	Lower Waterville United Baptist Cemetery, Carleton County, New				✓	✓	
Repository	---	Library & Archives Canada, Ottawa, Ontario, Canada,				✓		
Repository	---	Lucy Maud Montgomery Museum, Park Corner, Queens County, Prince				✓		
Repository	---	Merritt & Slipp Cemetery, Queenstown, Queens County, New				✓	✓	
Repository	---	New Brunswick Museum and Archives, 277 Douglas Ave., Saint John,				✓		
Repository	---	North Bedeque United Church, Prince County, Prince Edward Island,				✓	✓	
Repository	---	North Wallace Loyalist Cairn, Cumberland County, Nova Scotia,				✓	✓	
Repository	---	North Bedeque Cemetery, Prince County, Prince Edward Island,				✓	✓	
Repository	---	Old Protestant Burying Ground, Charlottetown, Queens County, Prince				✓	✓	
Repository	---	Old Dock Cemetery, Alberton, Prince County, Prince Edward Island,				✓	✓	
Repository	---	Old Presbyterian Cemetery, Jolice, Westmorland County, New				✓	✓	
Repository	---	Palmer Family Cemetery, Central Hampstead, Queens County, New				✓	✓	

Add

Edit

Delete

Primary

Viewing the list of repositories in Second Site:

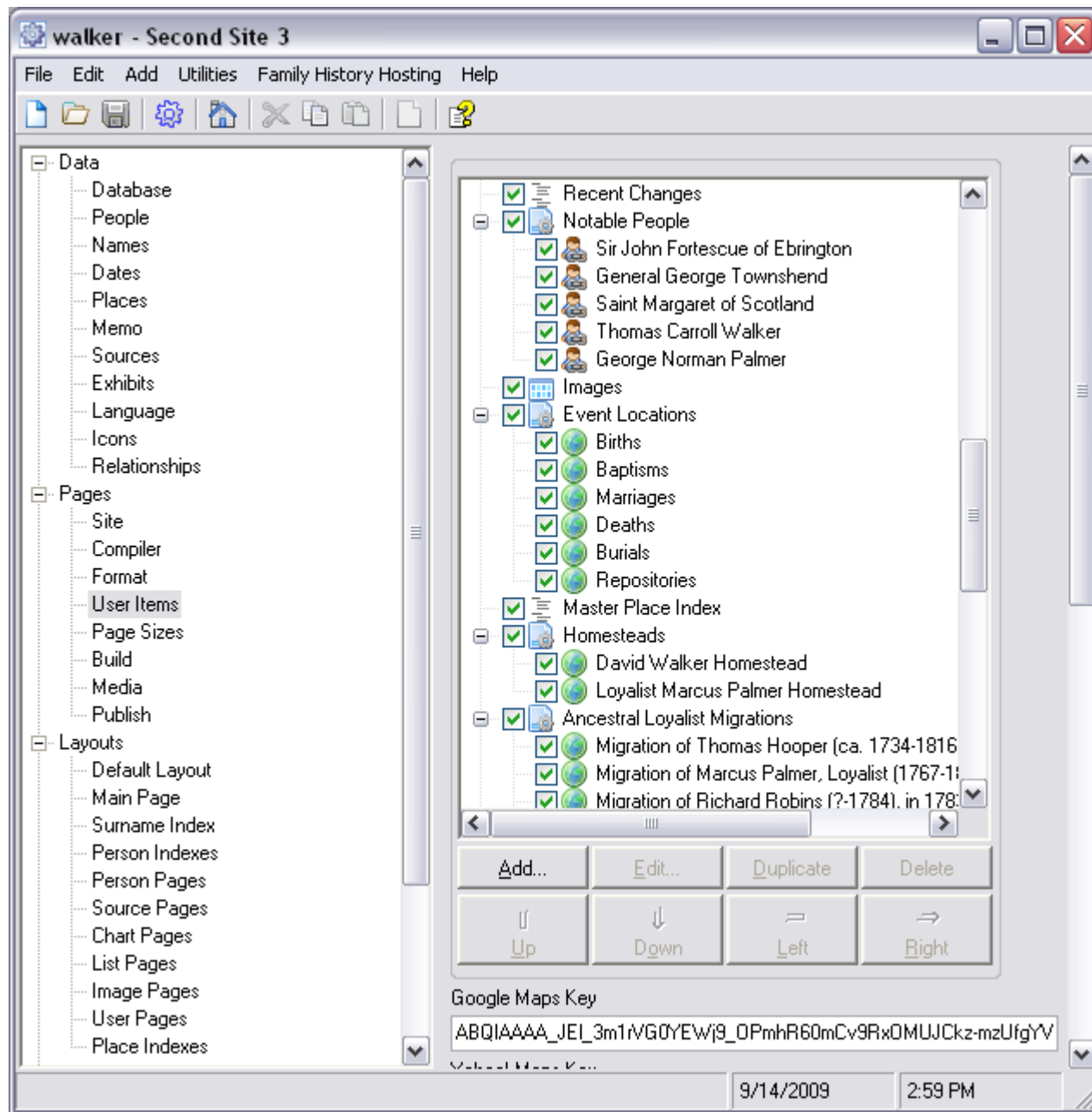
When one views the Repositories “person”, they will appear in order, with the tag Detail info, exhibit and caption for the exhibit. Two examples are shown below:

Repository*	<p>Information was gathered at <u>Elmwood Cemetery, Moncton, Westmorland County, New Brunswick, Canada.</u></p>  <p>Elmwood Cemetery, Moncton, Westmorland County, New Brunswick, Canada.</p>
-------------	---

Repository	<p>Information was gathered at <u>Provincial Archives of New Brunswick, Bonar Law - Bennett Building, 23 Dineen Drive, UNB Campus, Fredericton, York County, New Brunswick, Canada.</u></p>  <p>Provincial Archives of New Brunswick, Bonar Law - Bennett Building, 23 Dineen Drive, UNB Campus, Fredericton, York County, New Brunswick, Canada.</p>
------------	---

Using the Map Feature in Second Site 3:

1. From the list of options in Second Site 3, select Pages > User Items.
2. In the list of Event Locations, select Add.
3. Follow the procedure shown below to get a feel for the look. You may wish to change the width & height, alignment, the mapping service, or map style.



Edit Map

Map Properties

☒ Enabled

Title: Repositories

Caption: Click the left mouse button and hold to scroll the map to different locations. Use the vertical scroll bar to zoom in

Width: 640

Height: 480

Alignment: Right

Clear: None

Mapping Service: Virtual Earth

Map Style: Hybrid

Center Point: 46.10578300,-64.77485000

Zoom Level:



Item List

Position: Left

Map Events

Repositories

Add...

Edit...

Delete

Place Format: Use Place Style

Edit

Preview

OK

Cancel

Viewing the Pages Created by Second Site 3:



View of Microsoft Virtual Earth map, Elmwood Cemetery selected.



View of the main entrance of Elmwood Cemetery when zoomed in.



View of the main entrance of Elmwood Cemetery, Bird's Eye View.

Conclusion:

The reader should be able to achieve the above results with little or no difficulty. I would appreciate hearing from those who have created their own “Repositories” in TMG, and perhaps the extra step using Second Site 3.

If you are experiencing difficulty in creating maps with Second Site, refer to my earlier article entitled “Mapping with SS2 – Migrations and Homesteads”.