

TMG Users Group Exhibits ~ Part 2

Using Images as Exhibits

Monthly Meeting
11 February 2007

Presentation by David Walker

Exhibits

- Part 1 presented some suggested types of material to use for exhibits
- Part 2 will include:
 - Methods of digitizing the images
 - Image editing (limited to cropping, resizing)
 - Suggested file management
 - Appending images / exhibits to TMG events
 - Creating a report
 - Printing / distributing

Suggestion

Create images at the highest resolution relevant to the quality of the original.

Archive all originals, work with copies.

Methods of digitizing the images

Scanner

Use a flatbed scanner for conventional photographs

Suggested Scanner Settings

Studio Portraits (controlled setting, high quality)



300-600 dpi, Grayscale



300-600 dpi, Sepia



300-600 dpi, Colour

Methods of digitizing the images

E-mail Attachment

The easy way to acquire images. The downside is that quality varies, and can often be dreadful due to lack of experience of the sender. Reply with “thank-you, but.....”

E-Mail Attachments



Original as sent by a knowledgeable cousin



Crop from the original as desired to use as a primary TMG exhibit. Use the original as a "story" exhibit.

Methods of digitizing the images

Camera (digital preferred)

Use a camera for situations where a scanner is not practical or possible, such as framed pictures, large books, large maps.

Large Portrait in Glassed Frame



Take outside, in shade, no flash, on tripod (watch for reflections – use a polarizing filter)

Large Portrait Removed From Frame



Take outside, in shade, no flash, on tripod (no reflections)

Large Portrait Removed From Frame



Crop, resize as desired

Large Portrait Removed From Frame



Crop further to use as TMG primary exhibits

Tintypes

Some tintypes are too bent to use in most scanners. A camera is a better choice.

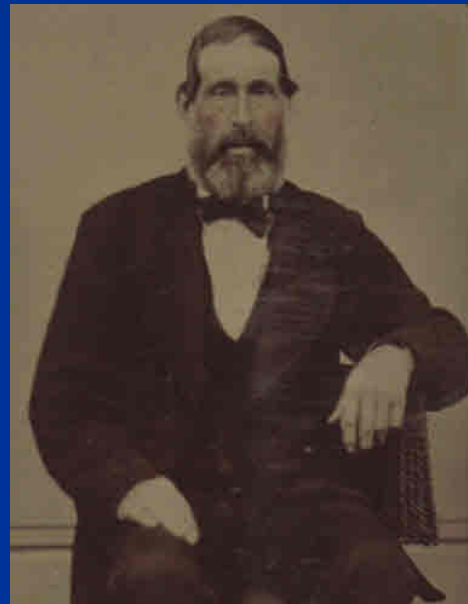
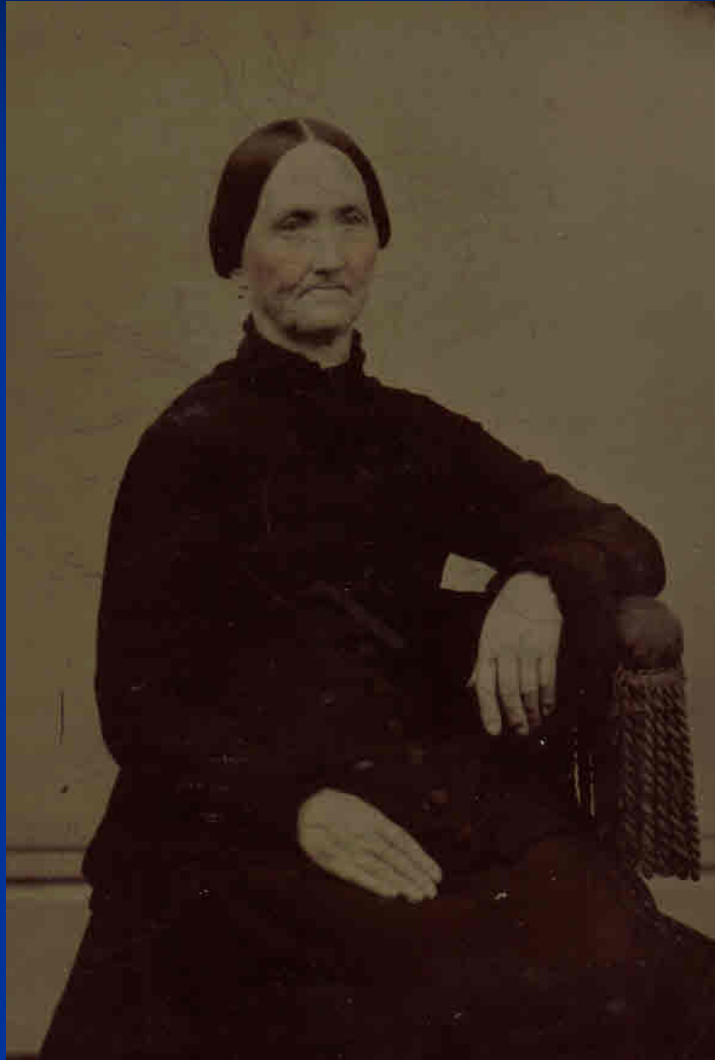


A worse case example

Tintypes



Tintypes (scanner)



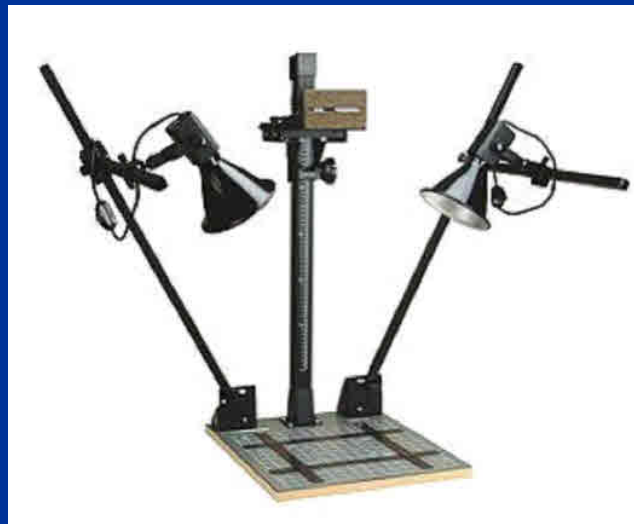
Internet Download



General George Townshend (1724-1807)
You may need to enquire about copyright

Copy Stand

A copy stand provides a controlled lighting environment for large (books, maps) or 3-dimensional objects. These are available for a variety of camera formats, multiple lights and range of base sizes.



Editing – Removing Clutter



Start with cropping to remove light pole, vehicle at far right & road

Editing – Removing Clutter



Remove power & telephone lines, vehicle, garbage cans, repair laneway

Editing – Removing Clutter



Vehicle is removed

Editing – Removing Clutter



Power & telephone lines removed

Editing – Removing Clutter



Garbage cans are removed, fence painted

Editing – Removing Clutter



Fresh layer of asphalt laid

Editing – Removing Clutter



Keep the tombstone intact, but remove all of the background clutter (house, vehicle, power lines).

Editing - Removing Clutter



Editing – Removing Droppings

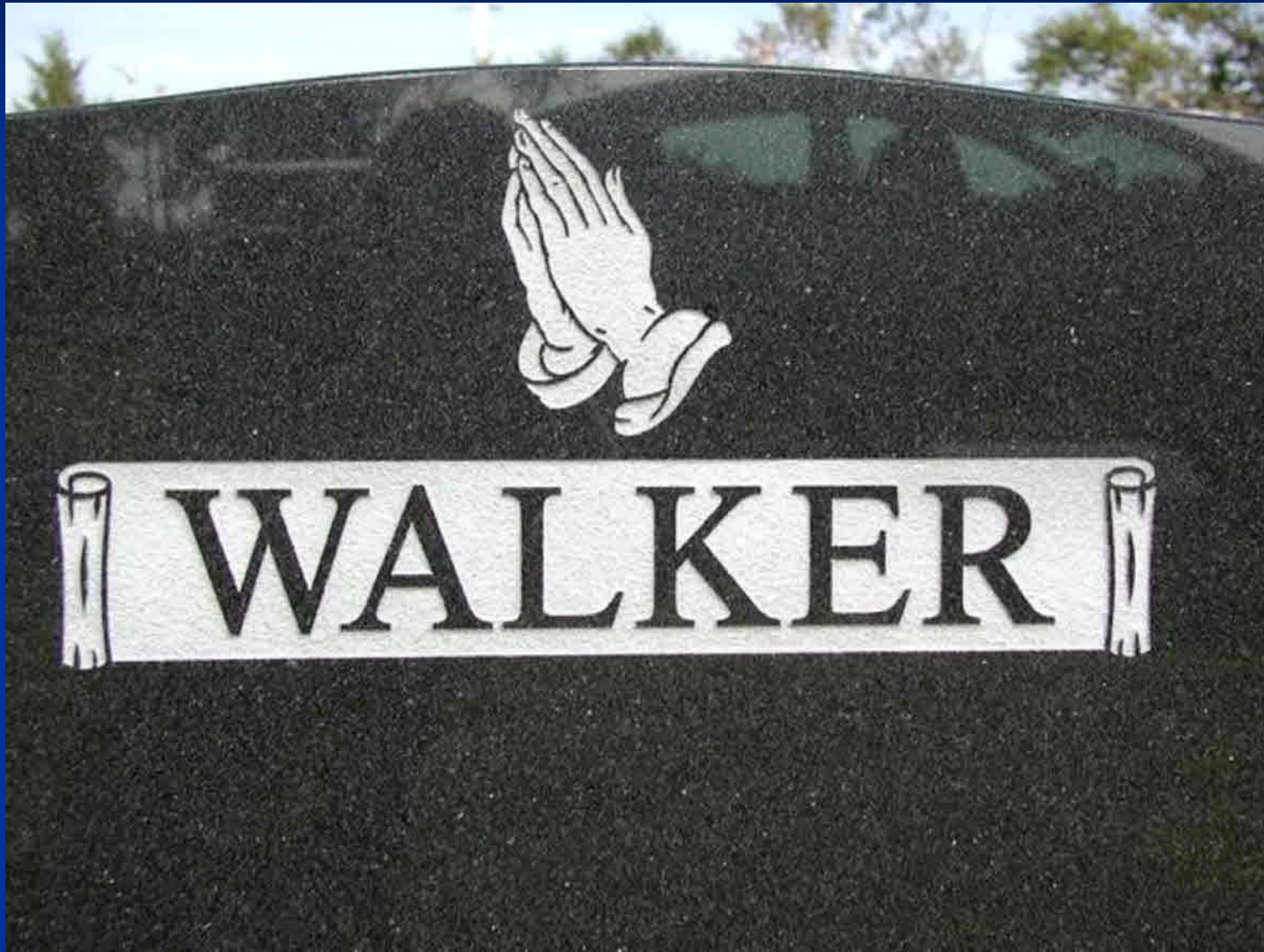


Tombstone Reflections



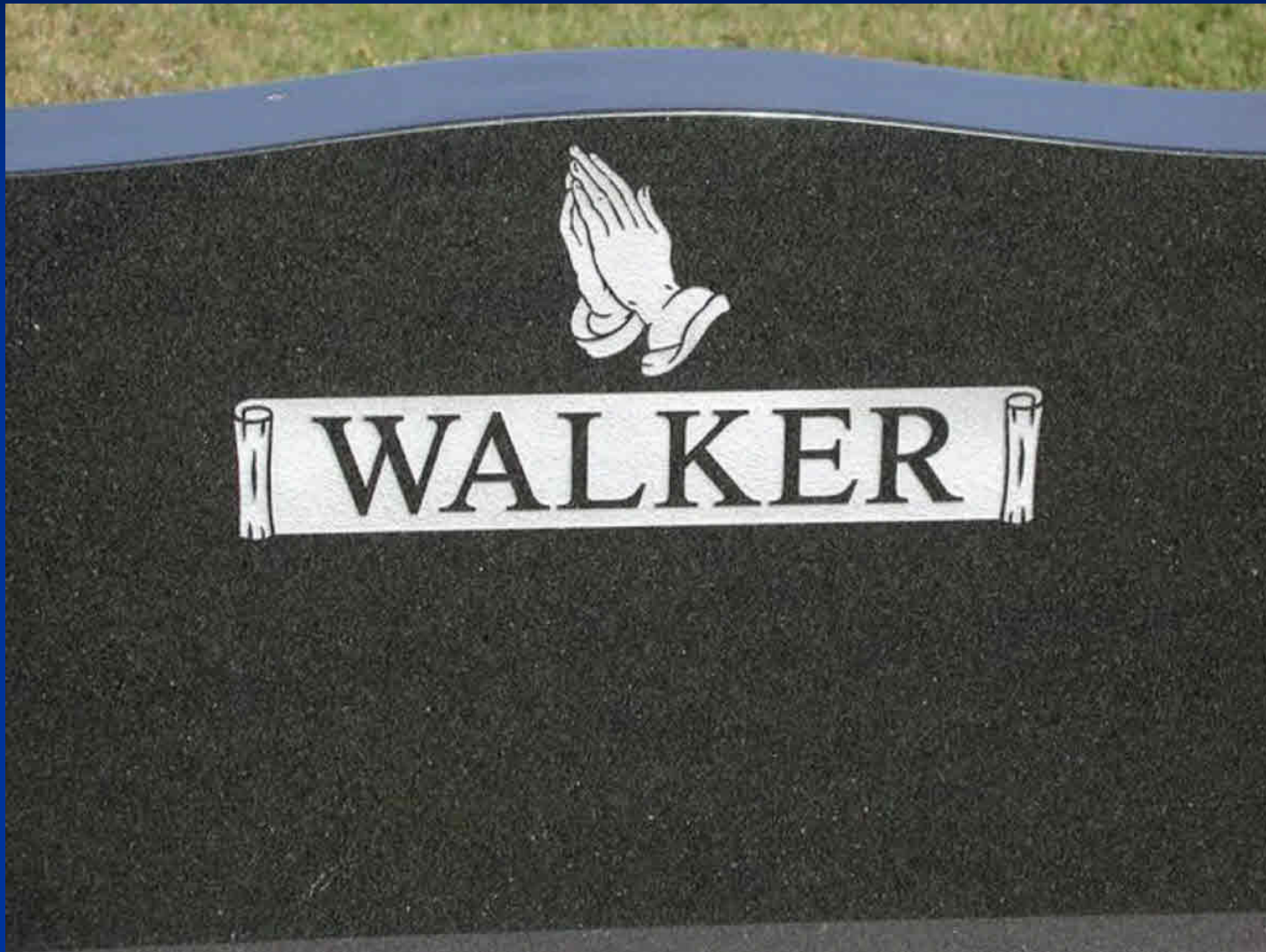
Look beyond the tombstone

Tombstone Reflections



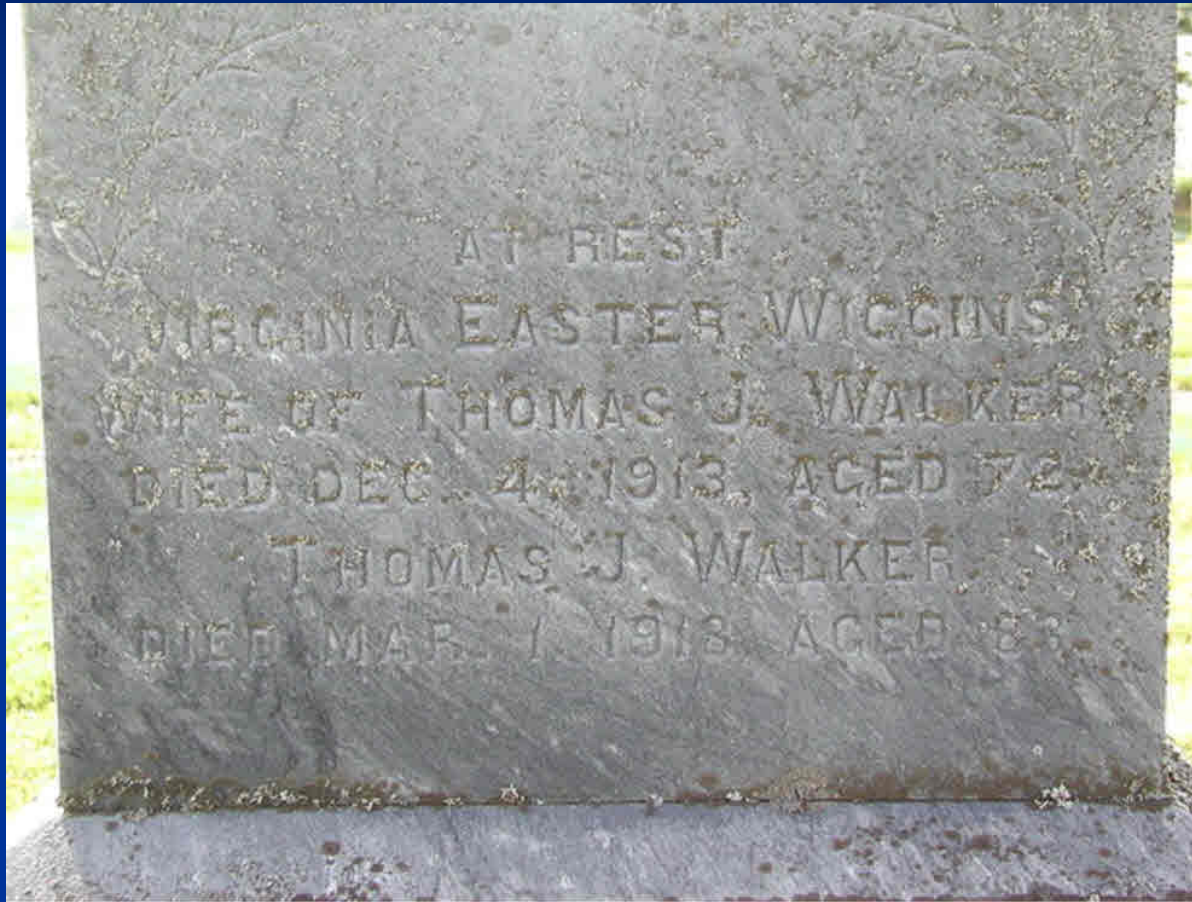
Look beyond the tombstone

Tombstone Reflections



Choose a better orientation, or stand behind another marker

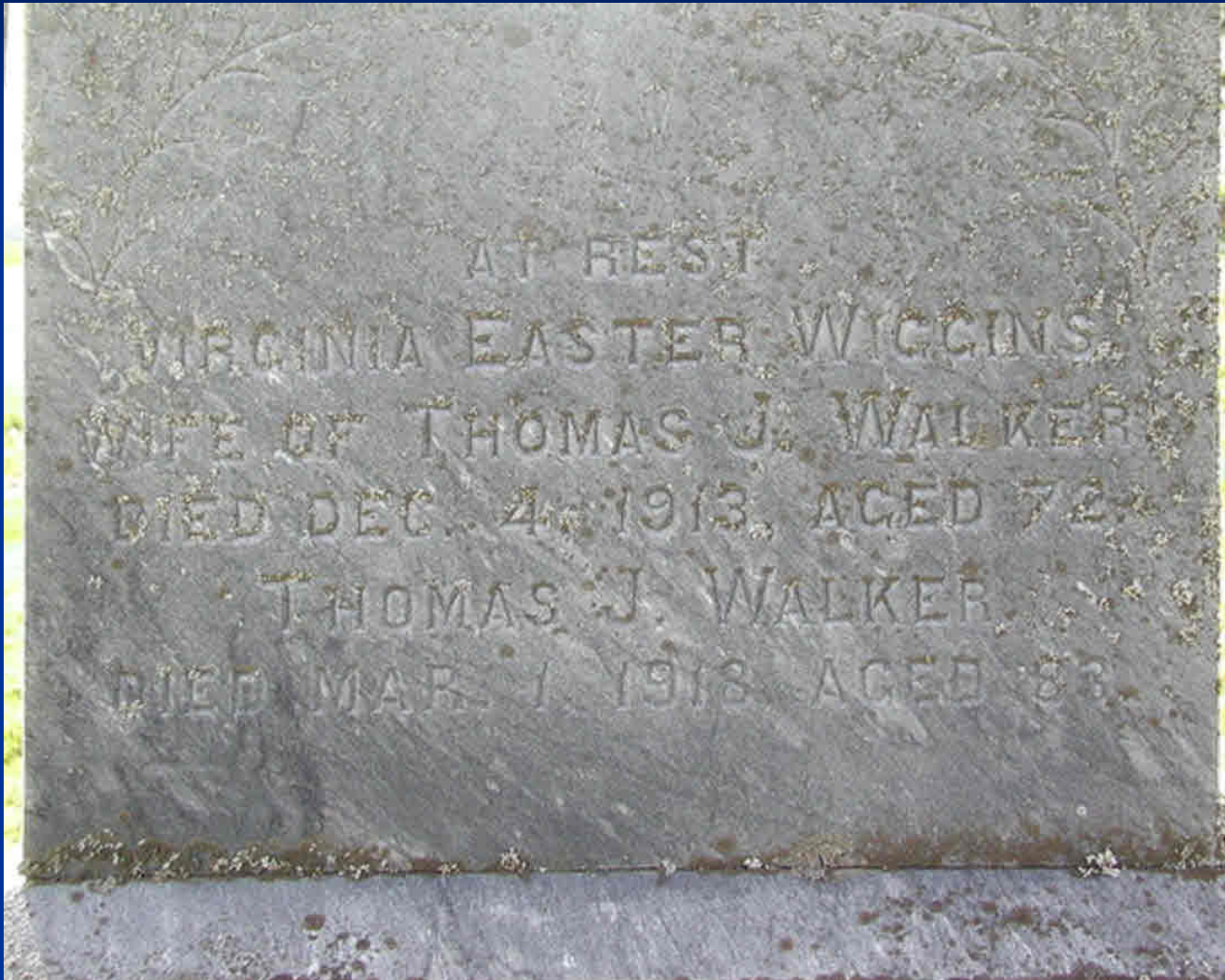
Editing Filters



Original unretouched image

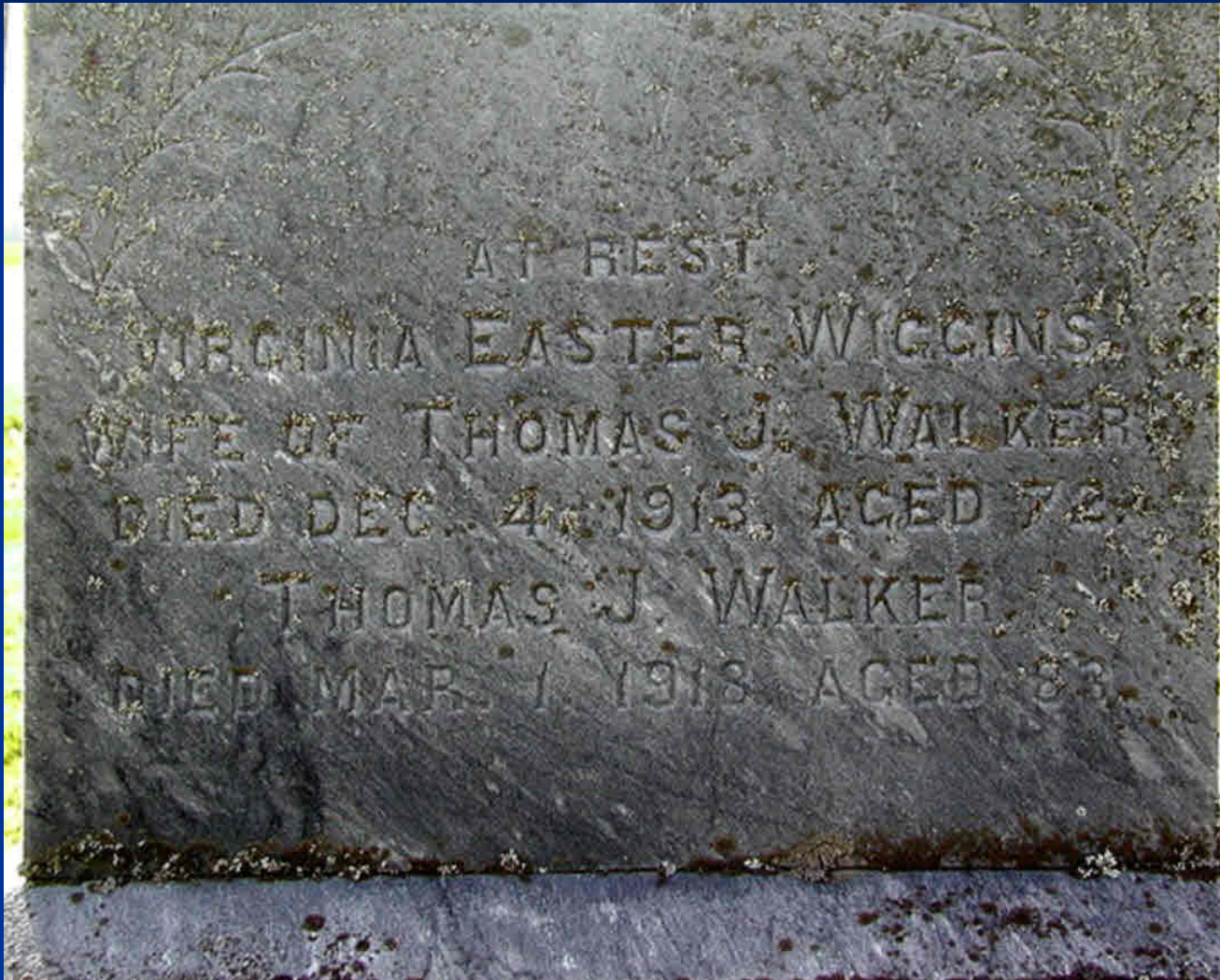
(The next step should have involved removing the lichens)

Editing Filters



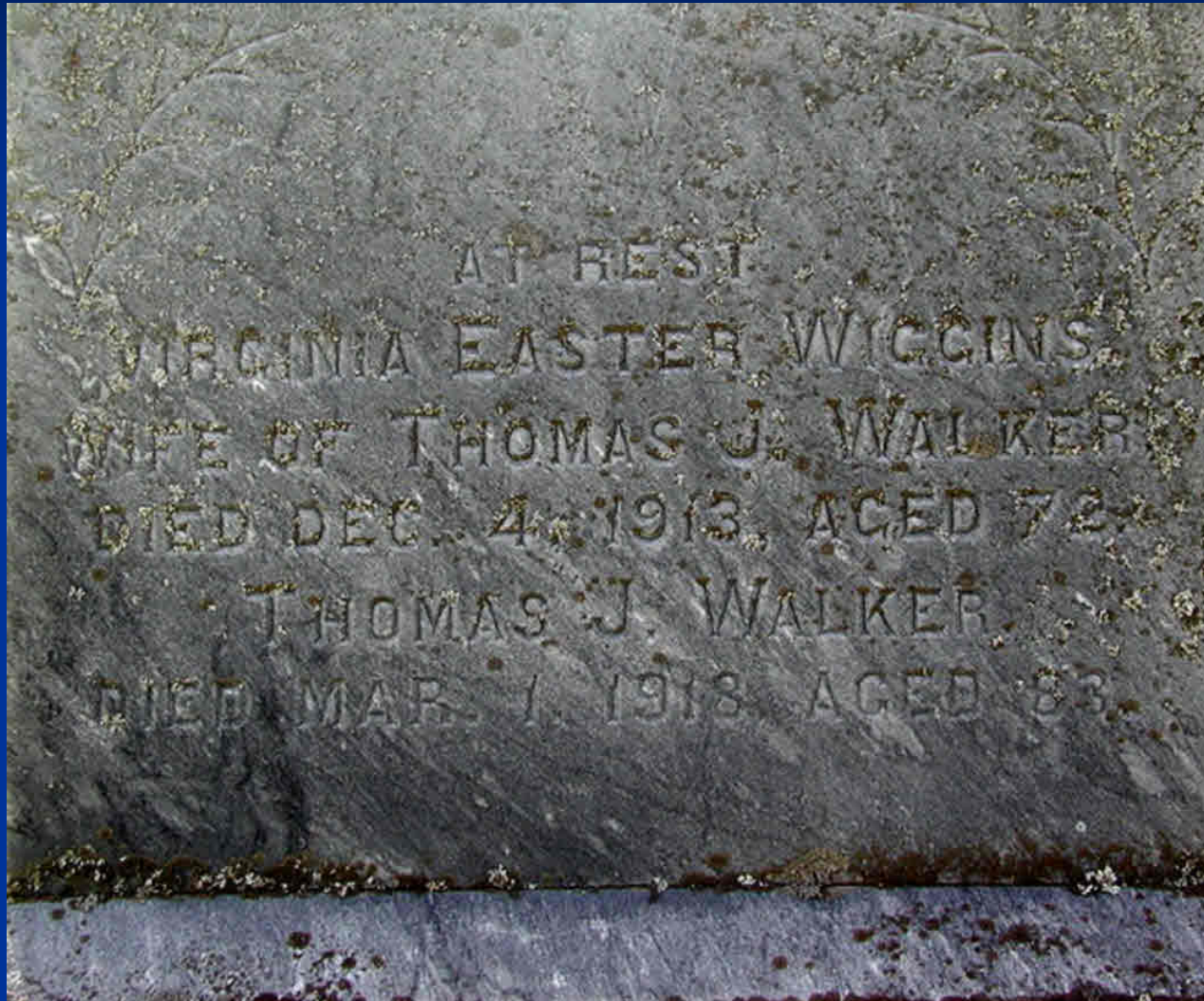
Distortion Correction Filter

Editing Filters



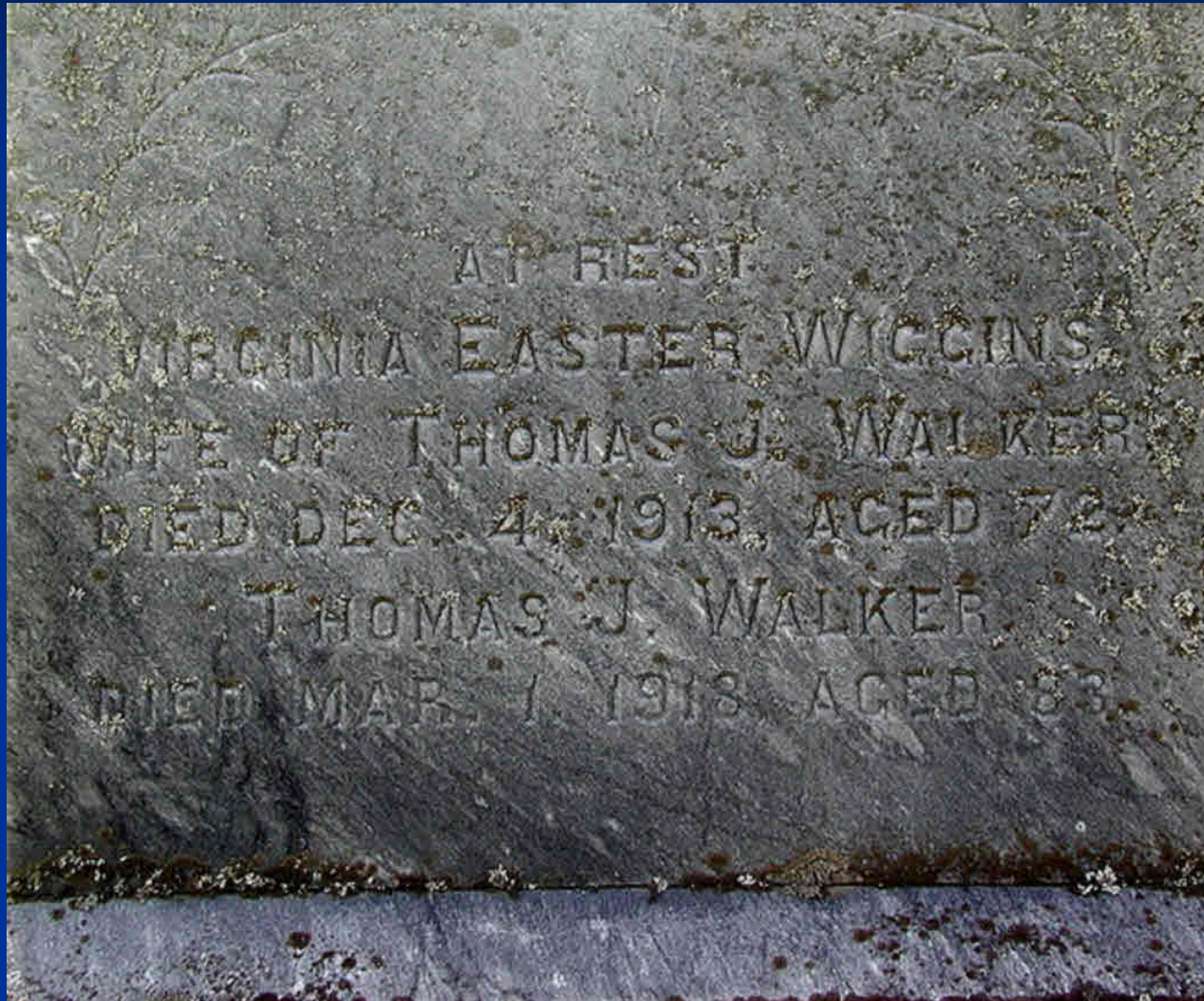
Auto Contrast Filter

Editing Filters



Crop & resize as necessary

Editing Filters



Sharpen filter (always make this the final adjustment)

Suggested file management

My Method

- Image Library
 - Genealogy
 - Surnames
 - Walker
 - Bibles
 - BMD
 - Census
 - Deeds
 - Heirlooms
 - Homesteads
 - Letters
 - Migration Records
 - Signatures
 - Tombstones
 - Wills

Appending images / exhibits to TMG events

Now we move to TMG