

Second Site ver. 4.2.2 Overview ~ Part I



Presented by
David Walker

3 November 2012

Introduction

Second Site is a third party software title specific to TMG, from the creative mind of John Cardinal.

Second Site is an excellent tool to publish your TMG data, whether you intend to create an on-line web site, or sharing your data on CD as an off-line virtual web site.

It provides a different way to view your project, and often reveals errors or inconsistencies in your data.

It can be configured to create a publication that is simple to comprehensive.

For a review of features, visit
www.johncardinal.com/ss

Simple vs. Comprehensive

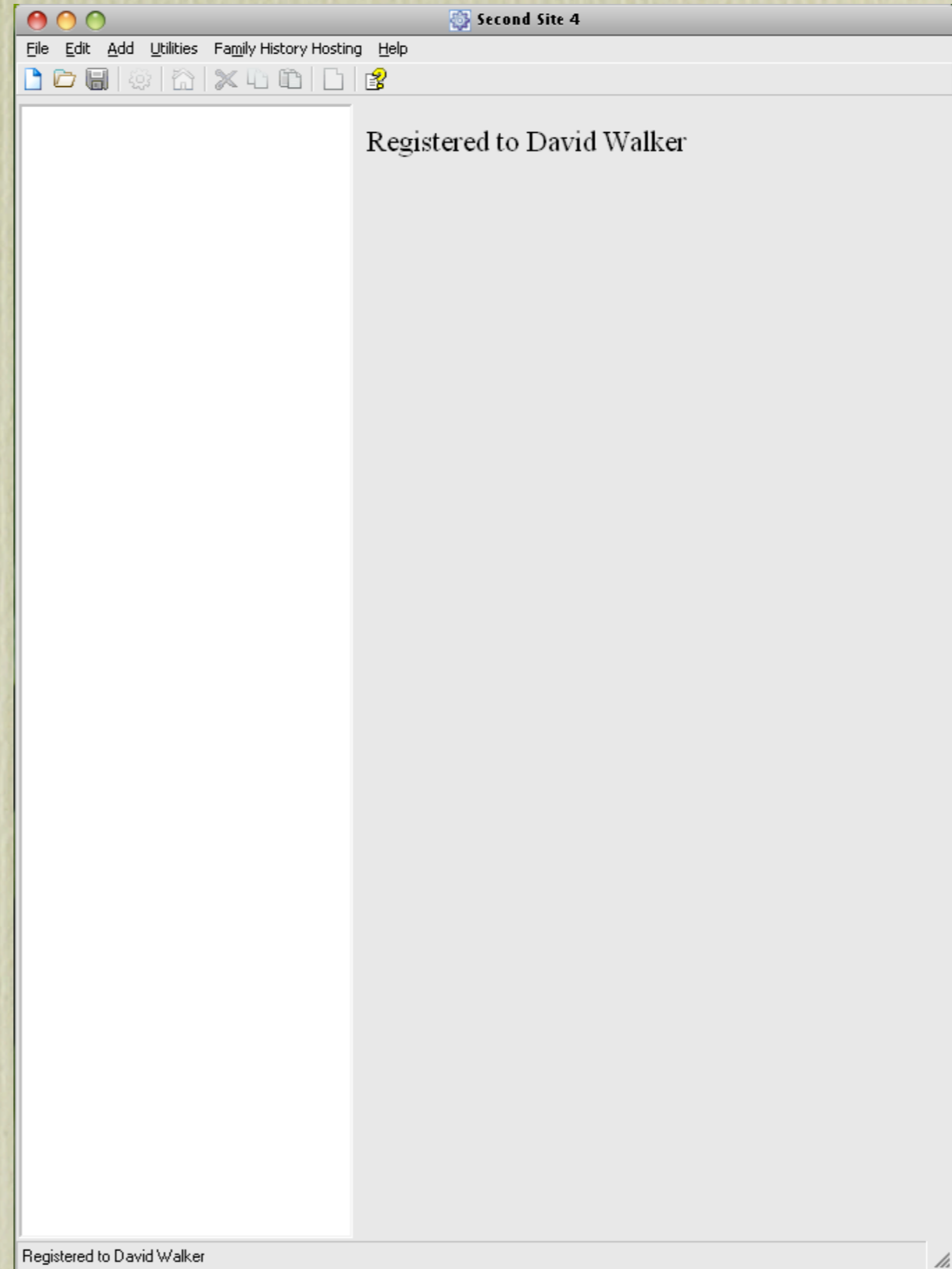
Like TMG, Second Site can be used in its simplest form, “out of the box”.

However, like TMG, it's not very inspiring to look at.

This presentation will be in two parts:

1. Second Site - Naked
2. Second Site - Embellished

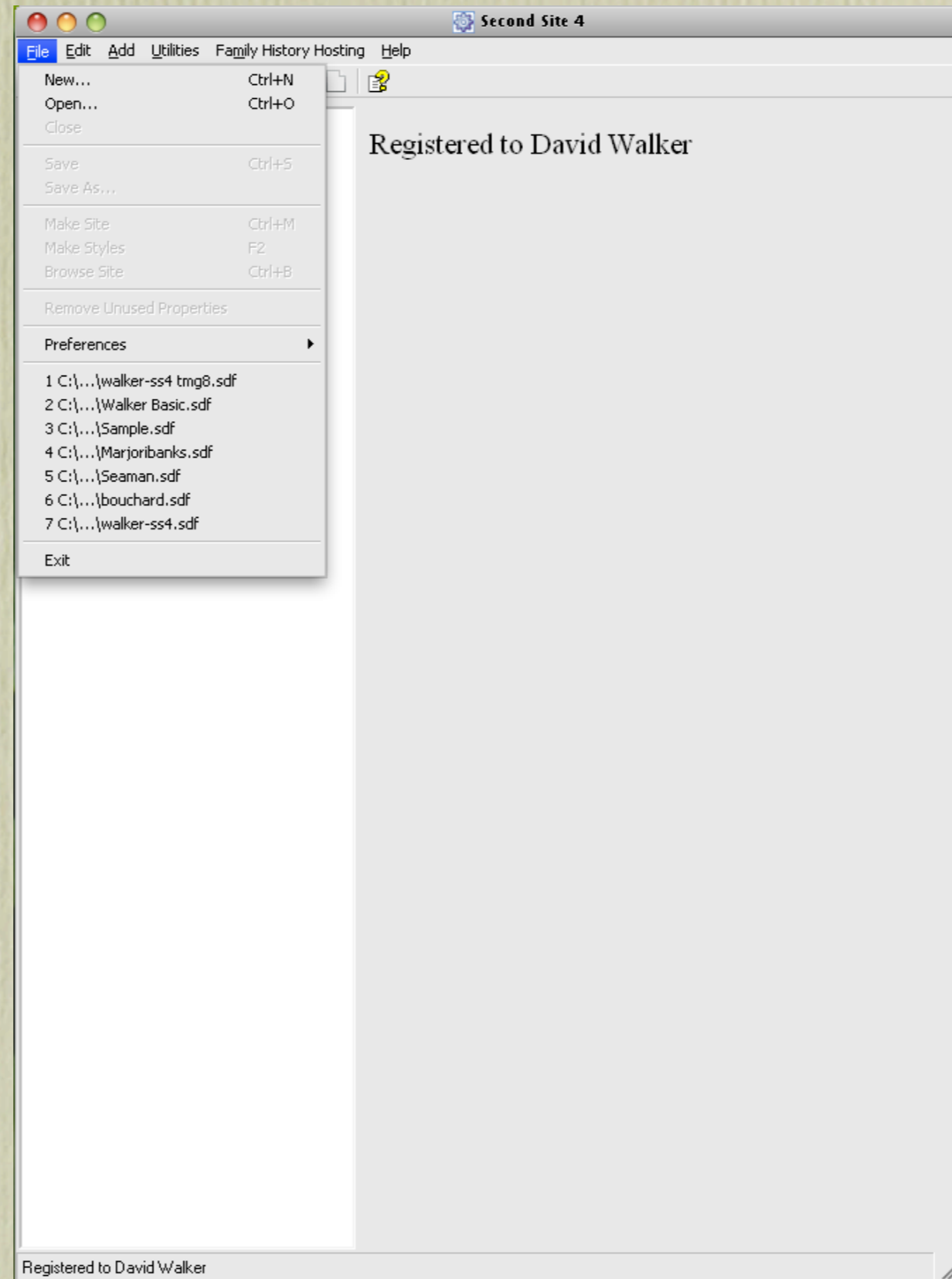
Second Site ~ Naked



The look is deceiving.

Getting Started

1. Click File > New
2. Enter a file name > Save
3. Set Default Values > OK

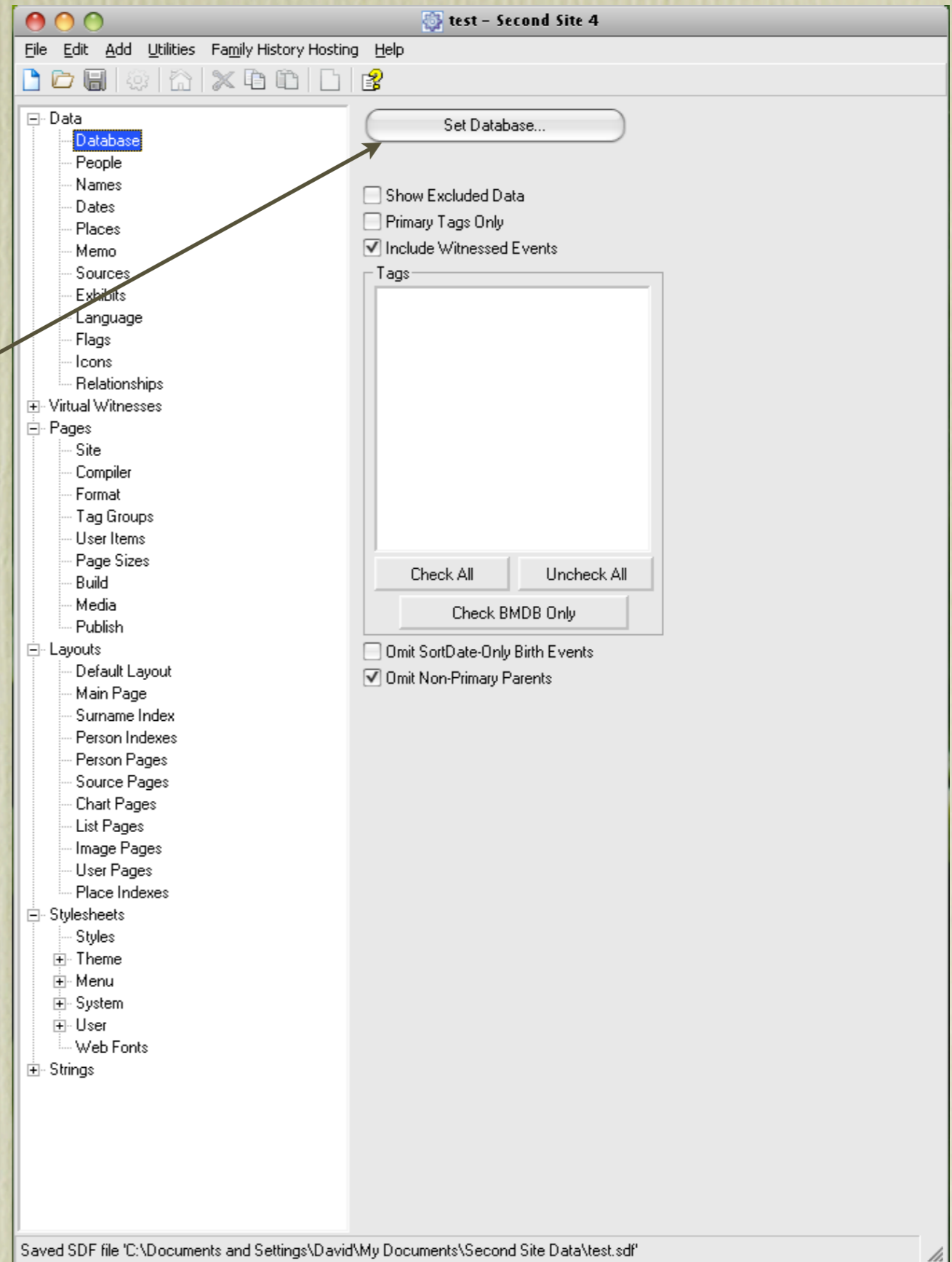


Getting Started

Now we have a menu of building blocks.

The next step is to select the TMG project file.

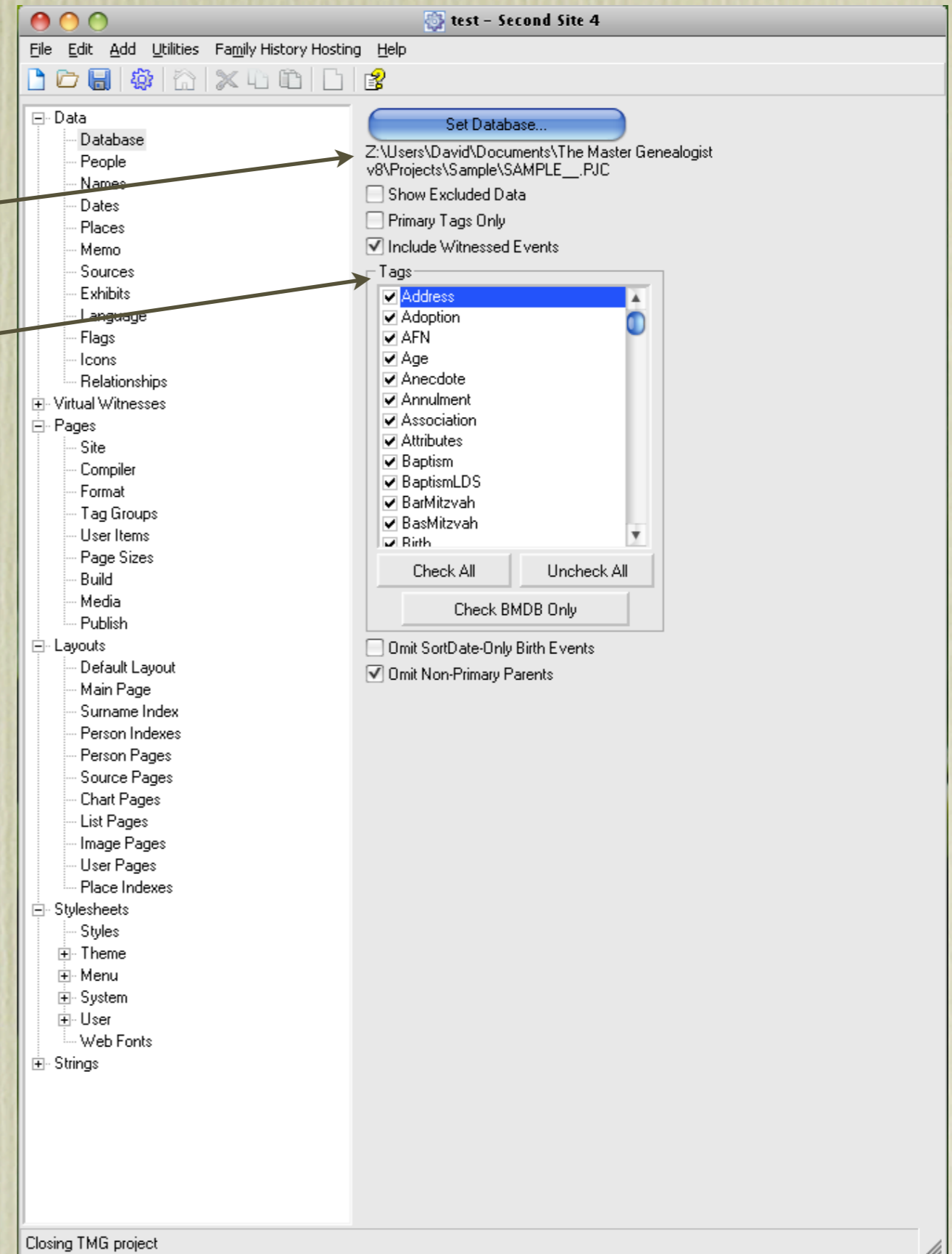
Click Set Database. A menu opens for you to select the TMG .pjc file.



Getting Started

The selected .pjc file & path are here

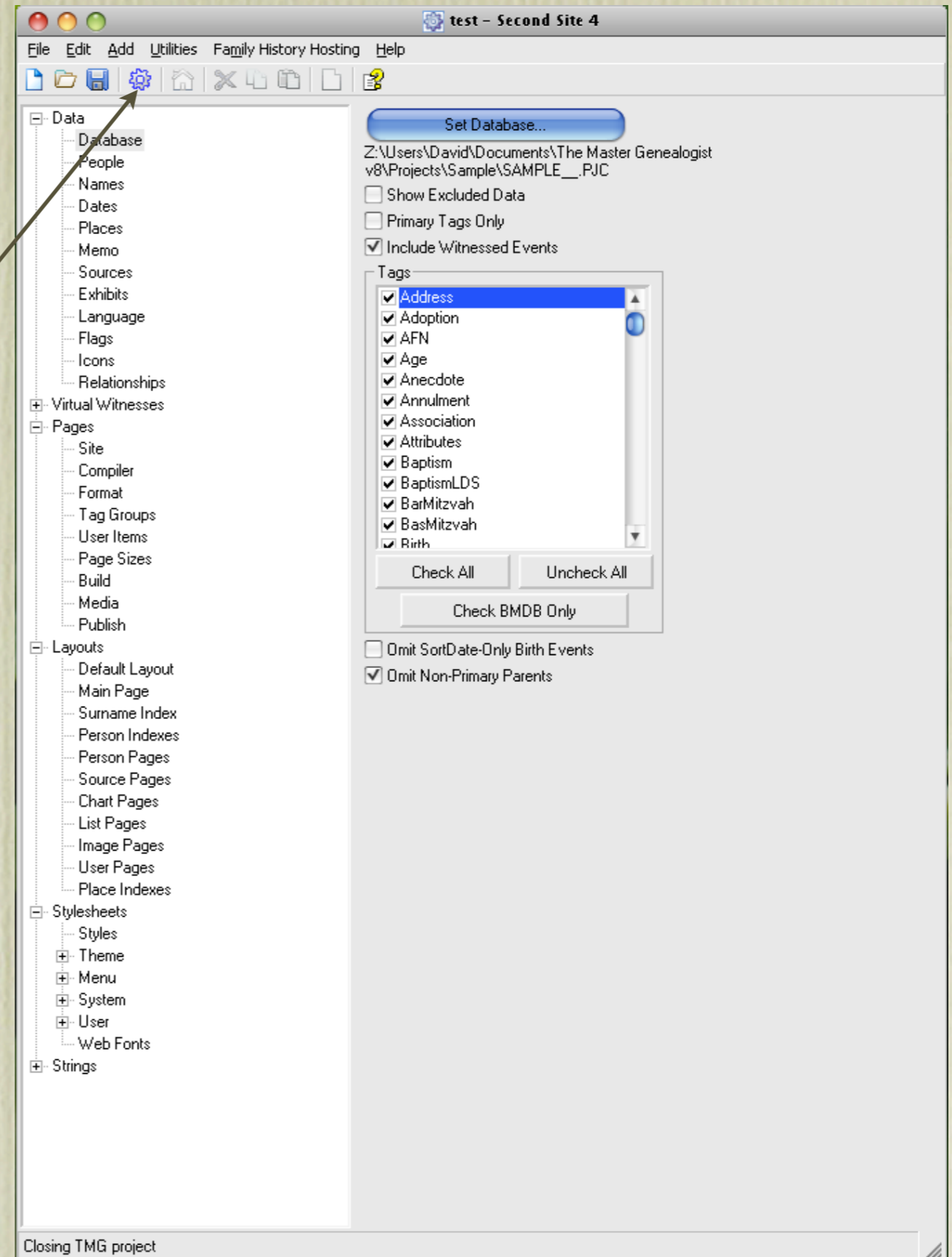
This is a list of standard and custom tags



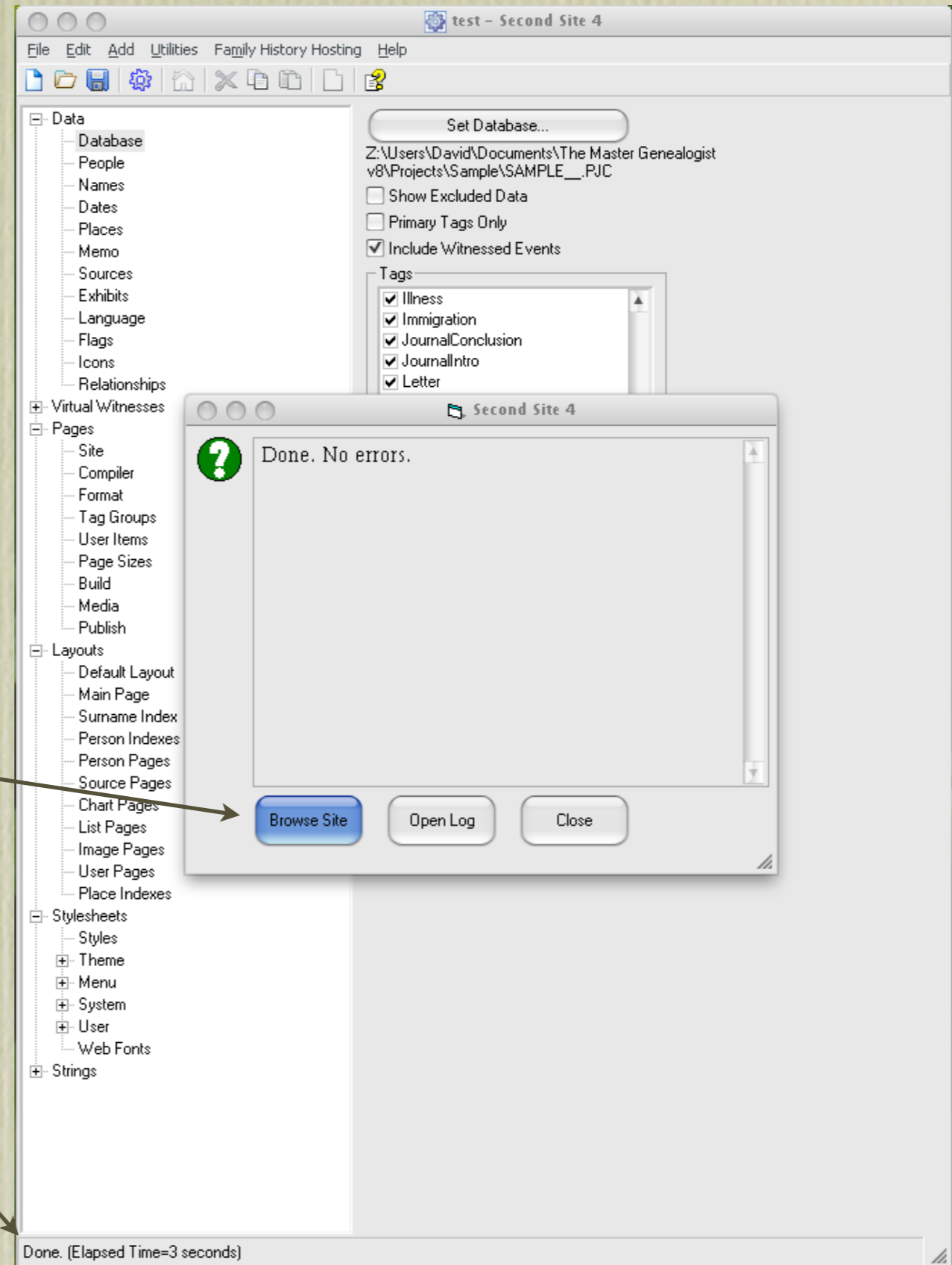
Getting Started

Let's see what Second Site looks like in its basic form.

Click the Make Site icon to build your site.



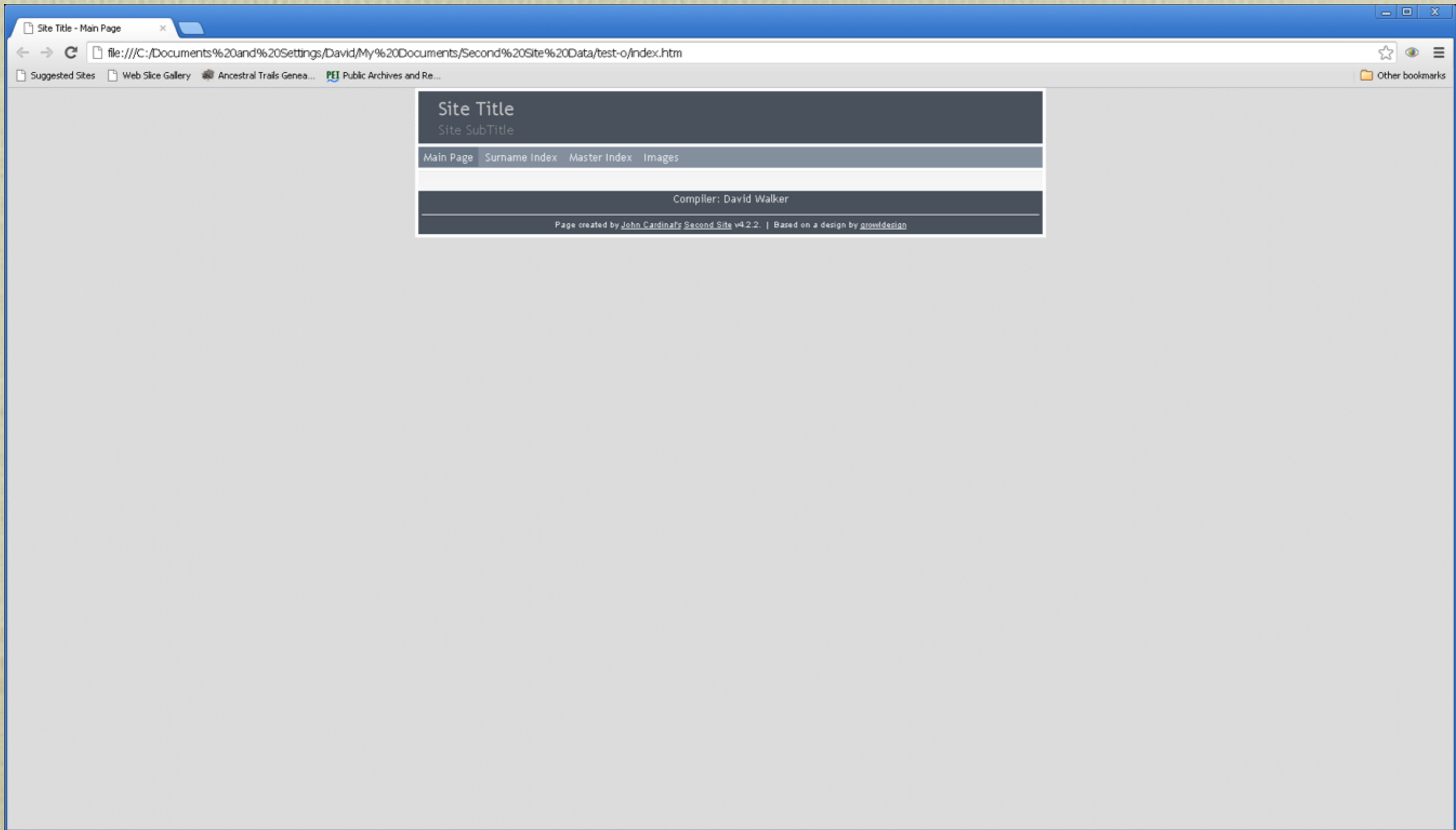
Getting Started



Click Browse Site to initiate your default web browser and the newly created web site will be displayed.

The time taken to create the site from the sample.pjc file was 3 seconds.

My site of 52,000+ (non-living) people takes 18 minutes.



This is the default Home Page. The first obvious matter to tend to is to insert a Site Title and Site SubTitle.

Site Title

Surname Index

[Main Page](#) [Surname Index](#) [Master Index](#) [Images](#)

[\(](#) [A](#) [B](#) [F](#) [H](#) [K](#) [M](#) [R](#) [S](#) [W](#) [Y](#)

(

[\(?\)](#)

A

[Alexander](#)

B

[Baldwin](#) [Buchanan](#)

F

[Ferguson](#) [Fugate](#)

H

[Haws](#) [Houts](#) [Hutchinson](#)

K

[Keebler](#) [Kelly](#) [Kibler](#)

M

[Myers](#)

R

[Range](#) [Rooker](#)

From the Home Page
there are three
options:

Surname Index

Master Index

Images

You can then click on
a surname to display
everyone with that
surname.

Clicking on the surname Alexander will display everyone with that surname, including women with that as a married name.

Click on a person's name to view their family. →

Alexander

[Annie Eliza](#) b. 10 Jan 1870, d. 11 Apr 1936
[B. F.](#) b. 3 Oct 1838, d. 13 Nov 1925
[Betsy](#) b. 10 Jun 1807, d. 27 Mar 1866
[Carrie Tipton](#) b. 11 Mar 1874
[Delilah](#) b. 22 Jan 1817, d. 25 Nov 1879
[Eliza Jane](#) b. 15 May 1843, d. 23 Nov 1869
[Elizabeth](#) b. 10 Jun 1807, d. 27 Mar 1866
[Frank](#) b. 3 Oct 1838, d. 13 Nov 1925
[Frank](#) b. 30 Aug 1882, d. 19 Feb 1956
[Frank \(Rev.\)](#) b. 3 Oct 1838, d. 13 Nov 1925
[Franklin](#) b. 3 Oct 1838, d. 13 Nov 1925
[Isabella Cox](#) b. 31 Jul 1841, d. 19 Mar 1919
[James](#) b. bt 1825 - 1830, d. 13 Mar 1839
[Jane](#) b. 4 Dec 1802
[Jennie](#) b. 4 Dec 1802
[John](#) b. bt 1770 - 1780, d. 18 Jul 1831
[John](#) b. 11 Oct 1812, d. 18 Oct 1876
[John Wright](#) b. 10 Oct 1867, d. 4 Jan 1891
[Josiah](#) b. 8 Aug 1819, d. 12 Apr 1883
[Josiah \(Rev.\)](#) b. 8 Aug 1819, d. 12 Apr 1883
[Julian](#) b. 12 Feb 1817, d. 4 Jul 1828
[Lula Elizabeth](#) b. 13 Mar 1865, d. 18 Oct 1954
[Margaret](#) b. 22 Oct 1814
[Martha](#) b. 20 May 1784, d. 27 Oct 1863
[Mary](#) b. 11 Jan 1805

Frank Alexander¹

M, b. 3 October 1838, d. 13 November 1925

[Pop-up Pedigree](#)

Father [John Alexander](#)² b. 11 Oct 1812, d. 18 Oct 1876

Mother [Delilah Woods](#)² b. 22 Jan 1817, d. 25 Nov 1879

Frank **Alexander** was born on 3 October 1838 at Elizabethton, Carter County, Tennessee.^{3,2} His full name was Franklin Alexander.⁴ The Carter Co. marriage record is the only place where a first initial of "B." has been found; it is possible that a clerk confused the groom with the prospective father-in-law, Benjamin Franklin Keebler..⁵

Frank Alexander, age 1, is probably one of the two males under 5 who appeared on the census in 1840 at Carter County, Tennessee, in the household of his father, [John Alexander](#);

John Alexander

1 m 15-20 [sic]

1 f 20-30

2 m under 5

total 4, no slaves, 1 in agriculture.⁶

Frank Alexander appeared as Franklin, age 11, on the census of 1850 in the household of John **Alexander**, at Carter County, Tennessee;

John Elexander [sic] 37 farmer 1250RE b.TN

Delila 33 m. 1835 b.TN

Samuel 14 school b.TN

Franklin 11 school b.TN

Eliza J. 9 school b.TN.⁷

Frank Alexander was educated circa 1854 at Duffield Academy, Elizabethton, Carter County, Tennessee.^{8,9} He was also educated circa 1858 at Emory & Henry College, Washington County, Virginia.^{8,9} He appeared as Franklin, age 21, a student, in the household of John **Alexander** on the census of 1860 at Elizabethton, Carter County, Tennessee;

John Alexander 47 merchant 2500RE 2500PP b.TN

Delila 43 b.TN

Samuel 24 school b.TN

From the Home Page
there are three
options:
Surname Index
Master Index
Images



Site Title

Master Index

[Main Page](#) [Surname Index](#) [Master Index](#) [Images](#)

- [\(?\) , Agnes to Young, Mary](#)

Compiler: David Walker

Since the TMG Sample project is relatively small, everyone is crammed into one link.

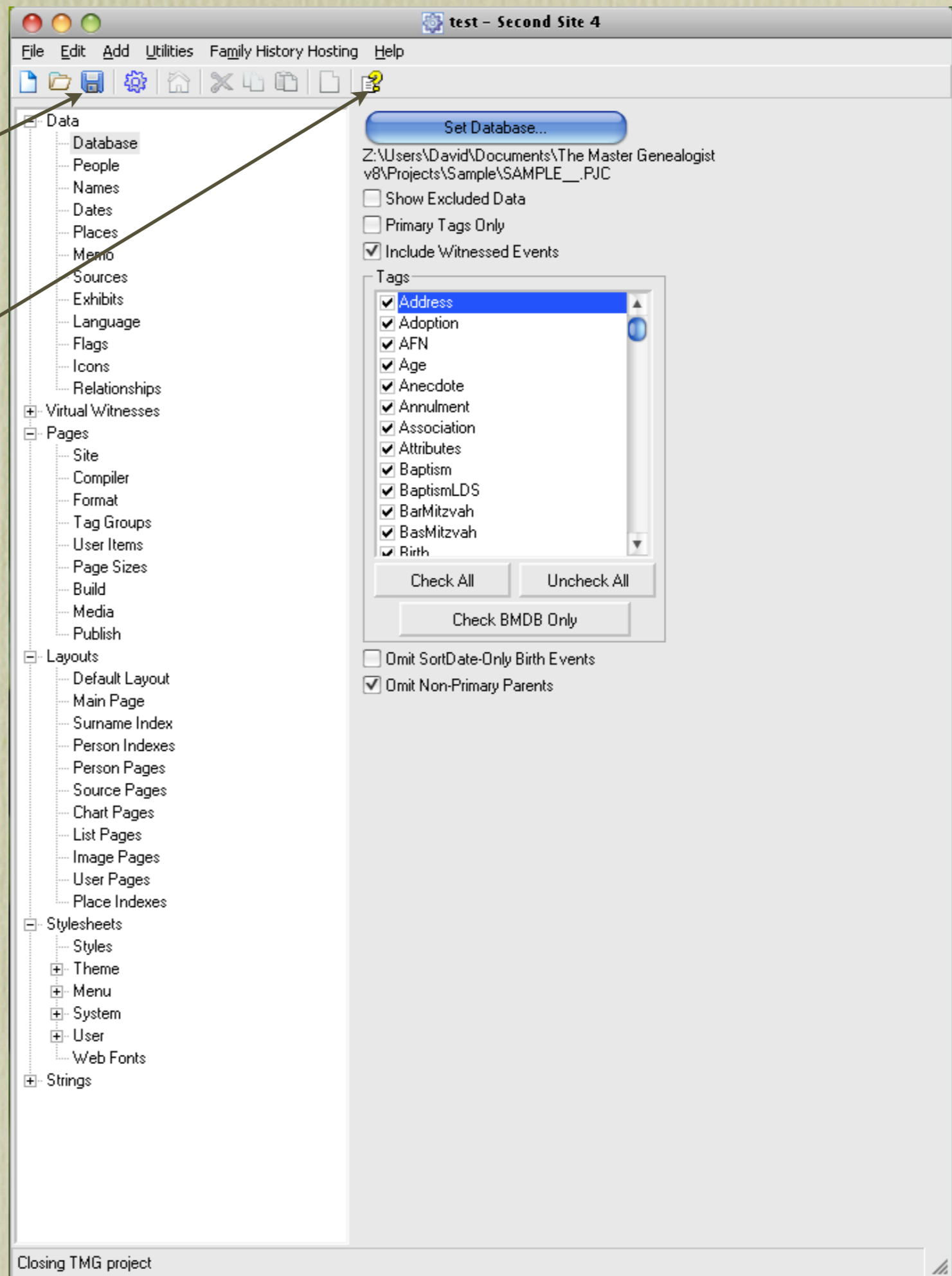
From the Home Page
there are three
options:
Surname Index
Master Index
Images



Note: Images in the TMG Sample project file are all internal. Second Site supports **external** image exhibits only. TMG Utility (also from John Cardinal) will convert internal images to external images, and will also create resized images for the Alternate Image Folder.

Remember to save your Second Site .sdf file after making any changes.

Clicking on the Help icon will display an extensive browser based Help file.



Second Site

Second Site is a genealogy web site builder for use with TMG.

> Home
Contents
FAQ
Search
Newsletters
Change Log

My Home Page
TMG Utility
On This Day

Customer
Comments

"SS is one of the most practical packages for family historians ever developed. SS makes their efforts available to the rest of the world. Thank you so much." - Ed E.

Second Site is the best way to publish your TMG data in HTML format. It has more features and provides more control than any GEDCOM-based method. If you are serious about publishing your TMG data on the Web, or if you are sharing your data with family members on custom CDs, you need Second Site!

Second Site is also a great tool to review your dataset. It is fast, and the HTML format makes the data easy to browse. Many users have reported that it has helped them to find inconsistencies in their data and other problems.

Are you afraid that you don't have what it takes to get a site published? Combine Second Site with [Family History Hosting](#) (FHH), a web hosting service designed for genealogists. Second Site includes a special one-step publish feature for use by FHH customers. As part of the FHH service, I'll help you register a domain, fine-tune your site, and publish the first version of your site. Second Site and FHH can help you get from offline to online!

What It Does

Second Site creates web pages from a genealogy database. It generates either narrative or grid style person pages, a master index, a surname index, and source pages. Check out the [partial list of features](#).

Example Sites

The *best* way to learn what Second Site can do is to review the [sites published by Second Site users](#). You can also review the official [demonstration site](#) or the [Theme and Format Examples](#) page to see some of the variations possible with Second Site.

What You Need

Second Site requires a database created and maintained with TMG.

Second Site News



Second Site 4 is now available!

For a description of the most recent changes, see [Second Site News #050](#).

See Second Site News [#048](#) for a description of the enhancements in SS4 compared to SS3.

How to Buy Second Site



Second Site 4 is available exclusively from the Family History Hosting web store.

The **full version** for new customers is **\$29.95 USD**.

The **upgrade** for Second Site 3 customers is **\$9.95 USD**.

CDs and DVDs



If you have a CD or DVD burner, you can create a CDs or DVDs to share with the members of your family. If they have a computer, the disk is all they need to review the family history you have compiled. See [Publishing Your Site on CD or](#)

The next time you run Second Site and click on File, the drop down menu will display your .sdf file(s).

Click on the file to open and begin to make modifications.

The screenshot shows the 'test - Second Site 4' application window. The 'File' menu is open, displaying a list of files including 'test.sdf', 'walker-ss4 tmg8.sdf', 'Walker Basic.sdf', 'Sample.sdf', 'Marjoribanks.sdf', 'Seaman.sdf', 'bouchard.sdf', and 'walker-ss4.sdf'. The 'Sample.sdf' file is highlighted. The 'Settings' dialog is also open, showing various options for site configuration. The 'Tags' section is expanded, showing a list of tags with checkboxes, including 'Address', 'Adoption', 'AFN', 'Age', 'Anecdote', 'Annulment', 'Association', 'Attributes', 'Baptism', 'BaptismLDS', 'BarMitzvah', 'BasMitzvah', and 'Birth'. The 'Address' tag is selected. The 'Omit Non-Primary Parents' checkbox is checked.

File Edit Add Utilities Family History Hosting Help

New... Ctrl+N
Open... Ctrl+O
Close

Save Ctrl+S
Save As...

Make Site Ctrl+M
Make Styles F2
Browse Site Ctrl+B

Remove Unused Properties

Preferences ▶

1 C:\...\test.sdf
2 C:\...\walker-ss4 tmg8.sdf
3 C:\...\Walker Basic.sdf
4 C:\...\Sample.sdf
5 C:\...\Marjoribanks.sdf
6 C:\...\Seaman.sdf
7 C:\...\bouchard.sdf
8 C:\...\walker-ss4.sdf

Exit

Media
Publish
Layouts
Default Layout
Main Page
Surname Index
Person Indexes
Person Pages
Source Pages
Chart Pages
List Pages
Image Pages
User Pages
Place Indexes
Stylesheets
Styles
Theme
Menu
System
User

Set Database...

Z:\Users\David\Documents\The Master Genealogist
v8\Projects\Sample\SAMPLE_.PJC

Show Excluded Data
 Primary Tags Only
 Include Witnessed Events

Tags

Address
 Adoption
 AFN
 Age
 Anecdote
 Annulment
 Association
 Attributes
 Baptism
 BaptismLDS
 BarMitzvah
 BasMitzvah
 Birth

Check All Uncheck All

Check BMDB Only

Omit SortDate-Only Birth Events
 Omit Non-Primary Parents

Second Site - Embellished

There are far too many enhancements one can include with Second Site to describe in a single presentation.

This presentation will describe options in the main list.

Future presentations will describe basic editing to the .sdf file and User Items, which can become very interesting.